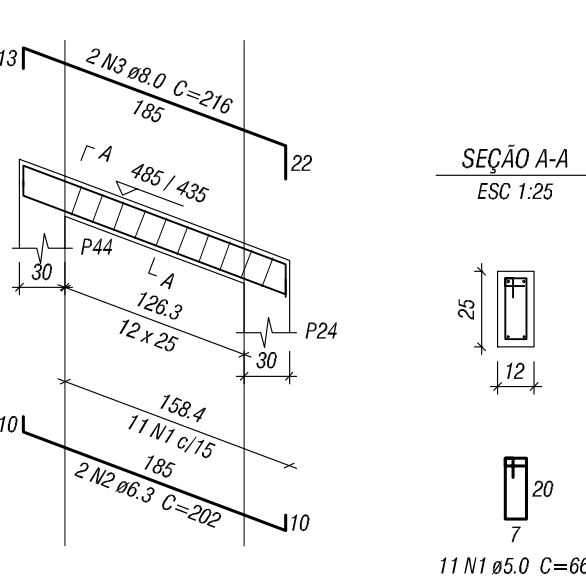
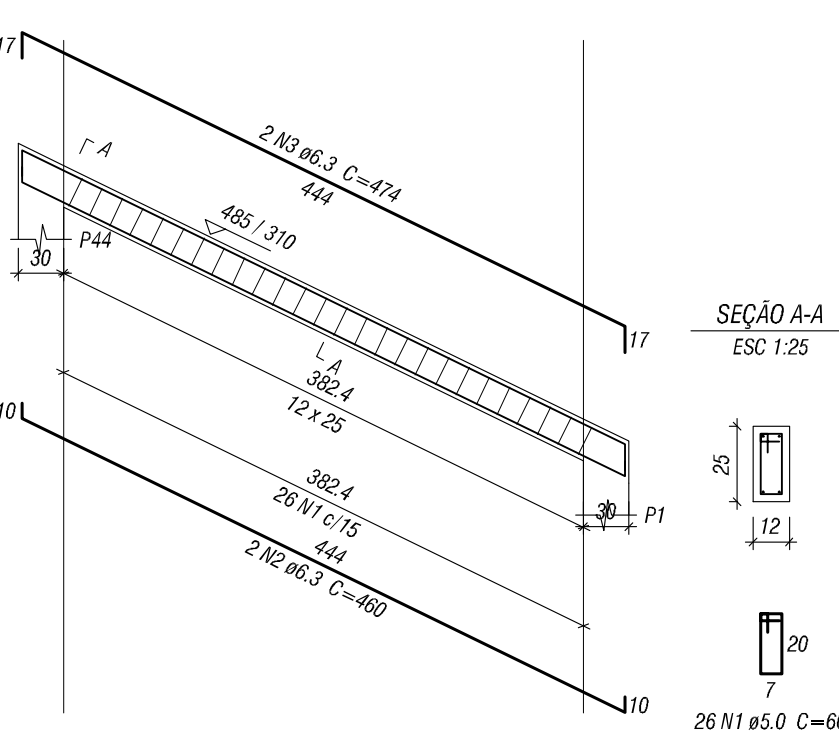


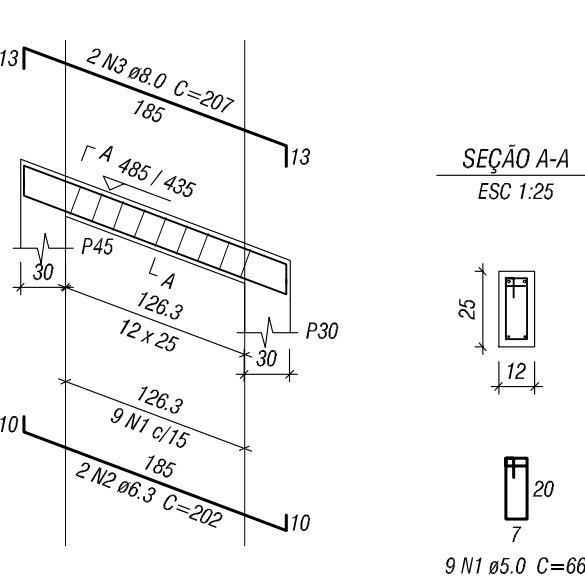
V301 (12 x 25)



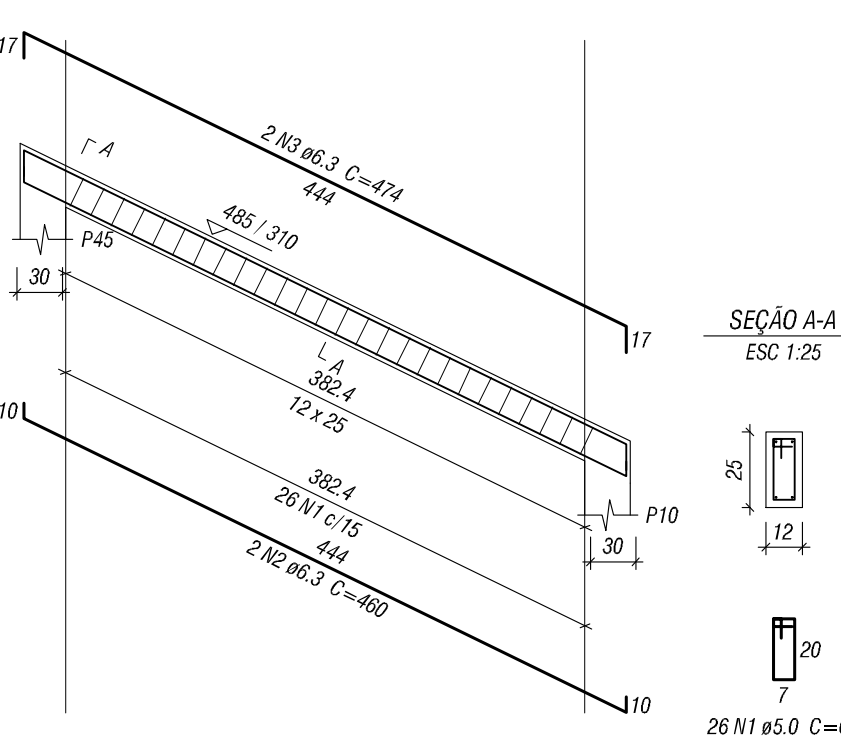
V302 (12 x 25)



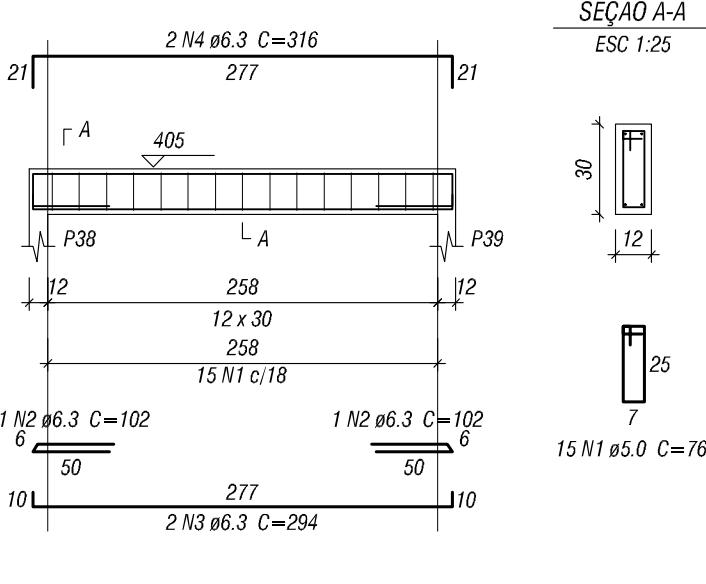
V303 (12 x 25)



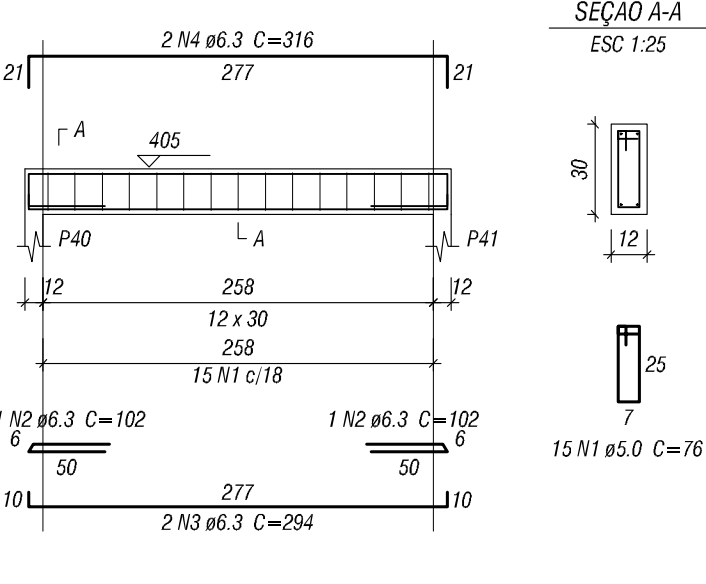
V304 (12 x 25)



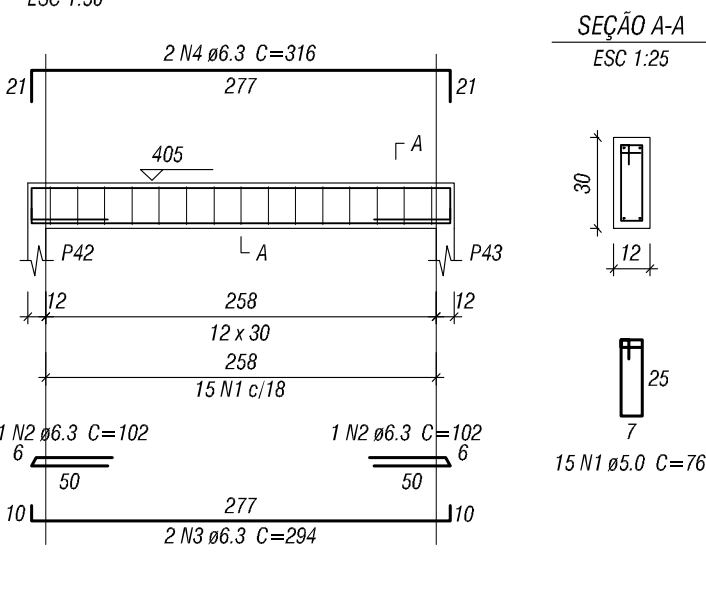
V305 (12 x 30)



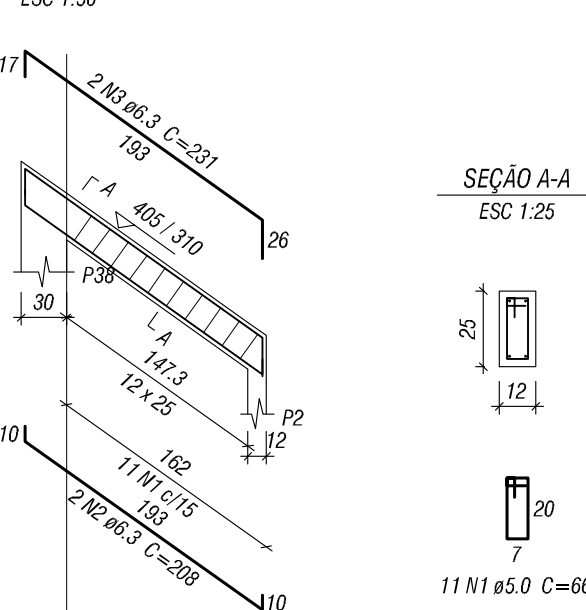
V306 (12 x 30)



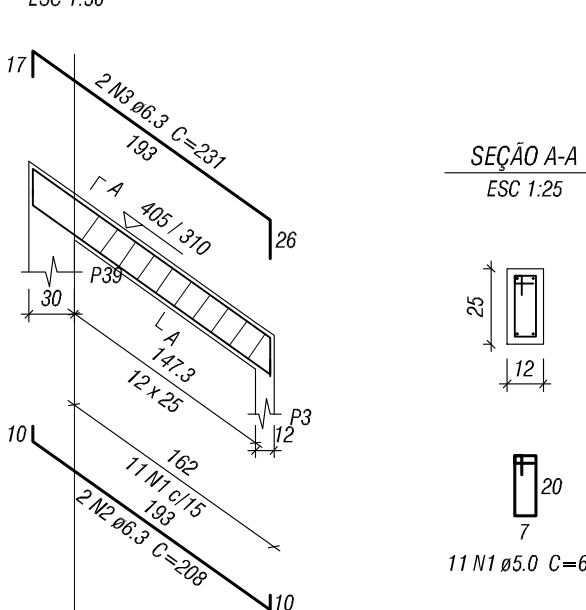
V307 (12 x 30)



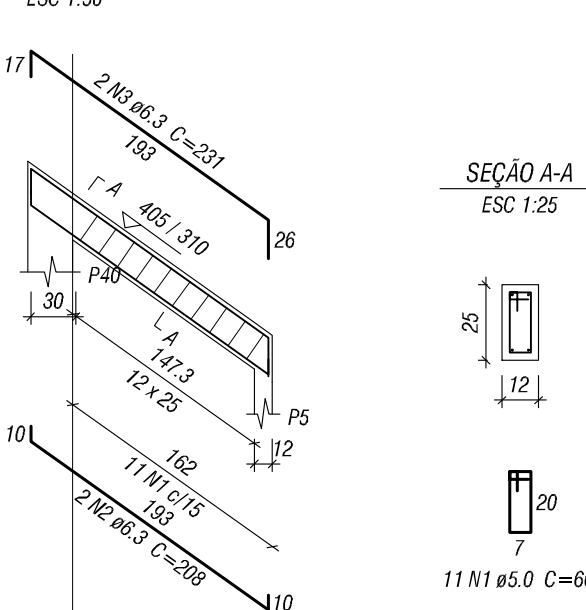
V309 (12 x 25)



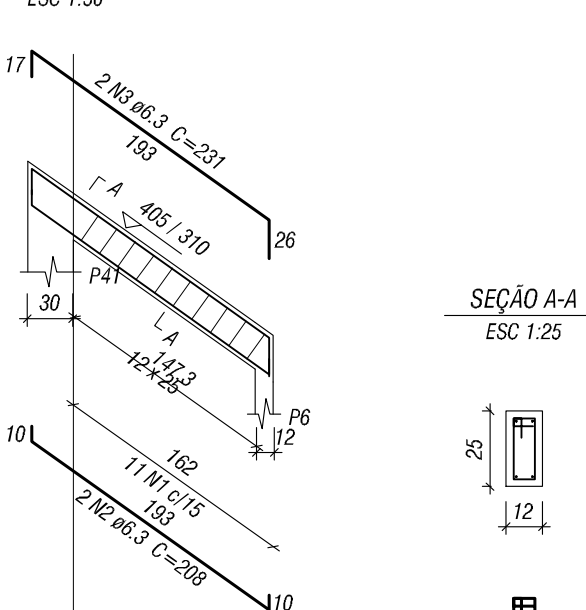
V310 (12 x 25)



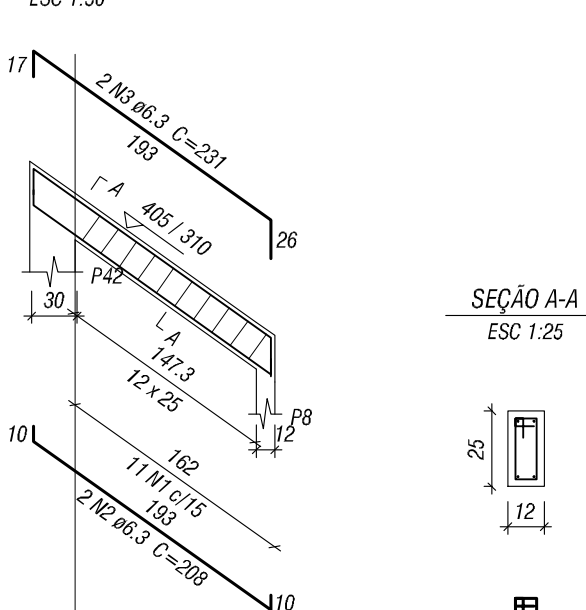
V311 (12 x 25)



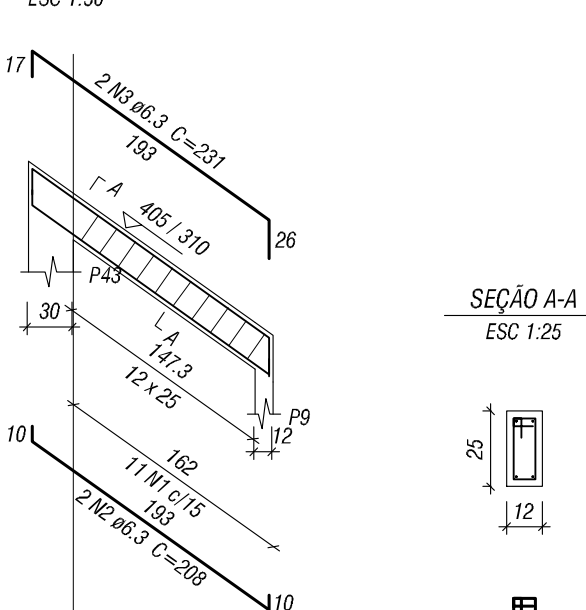
V312 (12 x 25)



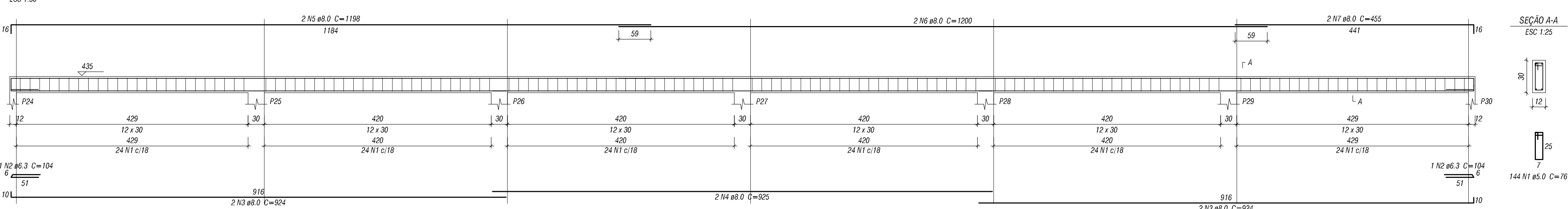
V313 (12 x 25)



V314 (12 x 25)



V308 (12 x 30)



Relação do aço

ELEMENTO	AÇO	N	DIAM	O	UNIT (cm)	C.TOTAL (cm)
V301	CA50	1	5.0	11	66	726
	CA50	2	6.3	2	202	404
	CA50	3	8.0	2	216	432
V302	CA60	1	5.0	26	66	1716
	CA50	2	6.3	2	460	920
	CA50	3	6.3	2	474	948
V303	CA60	1	5.0	9	66	594
	CA50	2	6.3	2	202	404
	CA50	3	8.0	2	207	414
V304	CA60	1	5.0	26	66	1716
	CA50	2	6.3	2	460	920
	CA50	3	6.3	2	474	948
V305	CA60	1	5.0	15	76	1140
	CA50	2	6.3	2	102	204
	CA50	3	6.3	2	294	588
V306	CA50	4	6.3	2	316	632
	CA60	1	5.0	15	76	1140
	CA50	2	6.3	2	102	204
	CA50	3	6.3	2	294	588
V307	CA60	1	5.0	15	76	1140
	CA50	2	6.3	2	102	204
	CA50	3	6.3	2	294	588
V308	CA60	1	5.0	144	76	10944
	CA50	2	6.3	2	104	208
	CA50	3	8.0	4	924	3696
	CA50	4	8.0	2	925	1850
	CA50	5	8.0	2	1198	2396
	CA50	6	8.0	2	1200	2400
	CA50	7	8.0	2	455	910
V309	CA60	1	5.0	11	66	726
	CA50	2	6.3	2	208	416
	CA50	3	6.3	2	231	462
V310	CA60	1	5.0	11	66	726
	CA50	2	6.3	2	208	416
	CA50	3	6.3	2	231	462
V311	CA60	1	5.0	11	66	726
	CA50	2	6.3	2	208	416
	CA50	3	6.3	2	231	462
V312	CA60	1	5.0	11	66	726
	CA50	2	6.3	2	208	416
	CA50	3	6.3	2	231	462
V313	CA60	1	5.0	11	66	726
	CA50	2	6.3	2	208	416
	CA50	3	6.3	2	231	462
V314	CA60	1	5.0	11	66	726
	CA50	2	6.3	2	208	416
	CA50	3	6.3	2	231	462

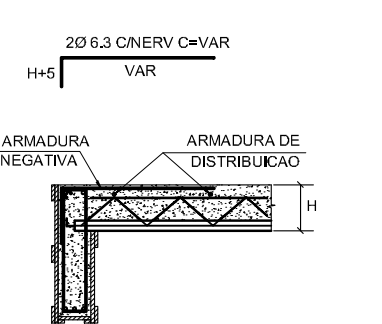
Resumo do aço

AÇO	DIAM	C.TOTAL (m)	PESO (kg)
CA50	6.3	143	35
	8.0	121	47.7
CA60	5.0	234.8	36.2
PESO TOTAL			
CA50		82.7	
CA60		36.2	

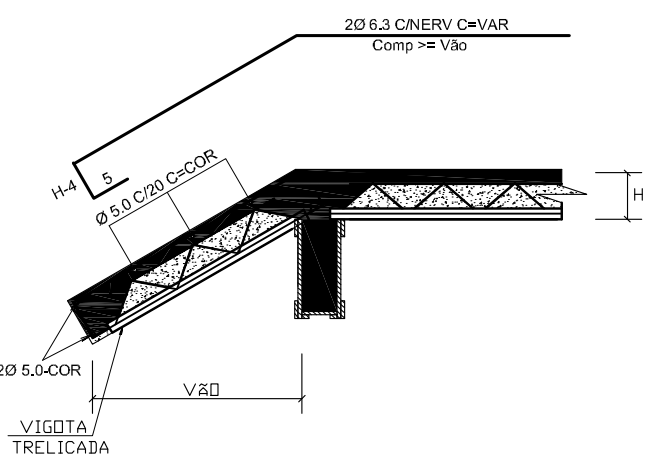
Vol. de concreto total (C-25) = 1.92 m³
Área de forma total = 38.86 m²

DETALHES CONSTRUTIVOS PARA LAJES PRÉ-MOLDADAS

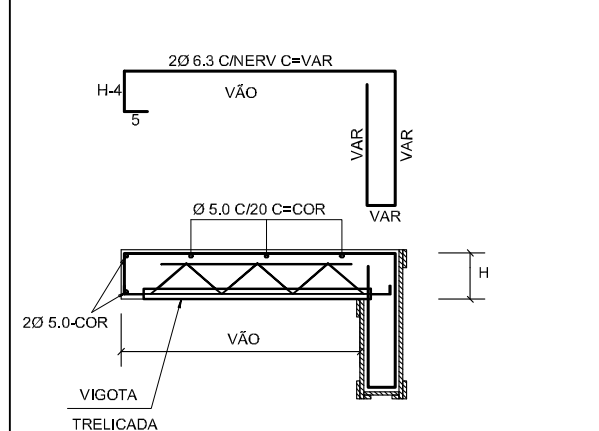
ARMADURA DE BORDO



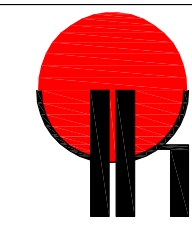
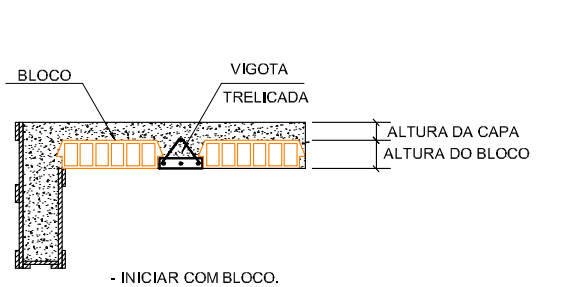
DET. BEIRAIS INCLINADO COM VIGOTAS



DET. BEIRAIS RETOS COM VIGOTAS



INICIO DE MONTAGEM



ENGENHARIA

Engenharia de Estruturas e Engenharia de Segurança do Trabalho

Excelência em projetos estruturais de concreto armado, concreto protendido, concreto pré-moldado, estruturas metálicas e alvenaria estrutural

Rua Tupã, 1903 - Sala 03 - Jd. Itália - Maringá - Paraná - CEP: 87060-510

Fone/Fax: (41) 3026-8993 - e-mail: yk@ykengeharia.com.br - Visite nosso site! http://www.ykengeharia.com.br

PROJETO:

ESTRUTURAL EM CONCRETO ARMADO

CLIENTE:

UENP - UNIVERS. EST. DO NORTE DO PARANÁ

OBRA:

PARA CONSTRUÇÃO DE UMA EDIFICAÇÃO DE ENSINO - CASA DO VISITANTE INTERNACIONAL

LOCAL:

Alameda Padre Magno, nº 841 - Nova Jacareizinho - Jacareizinho - Paraná

REFERÊNCIA(S):

DETALHES DAS VIGAS DO RESPALDO
DETALHE GENCICO PARA OS BEIRAS

REVISÃO:

R-00

PRANCHA:

09

RESPONSÁVEL TÉCNICO:

Engº Esp. Yutaka Mario Kobayashi Júnior
CREA PR-89.748/D

DATA CRIAÇÃO:

20/11/2013

DATA DA REVISÃO:

N/C

ART Nº:

20134714220

PROJETO Nº:

P-304

ESCALAS:

INDICADAS