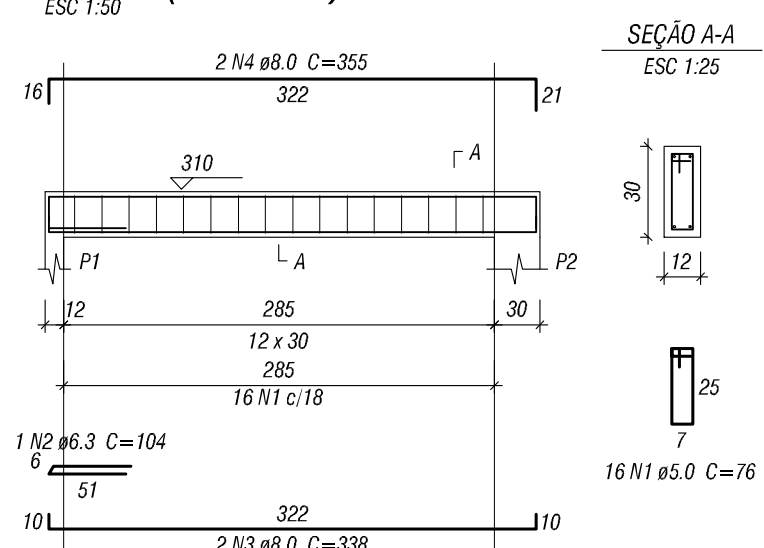
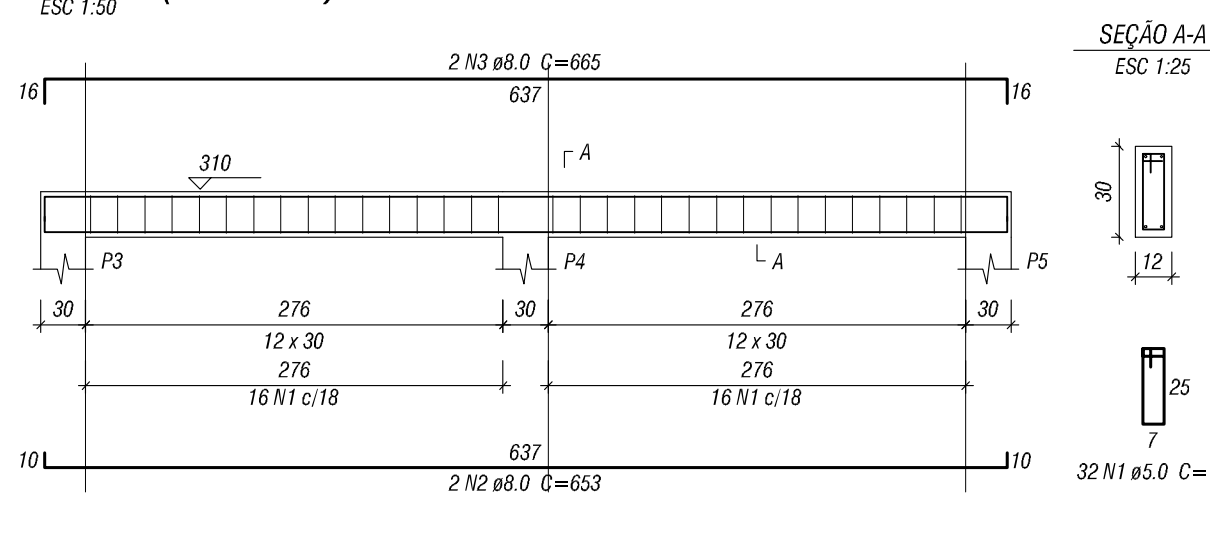


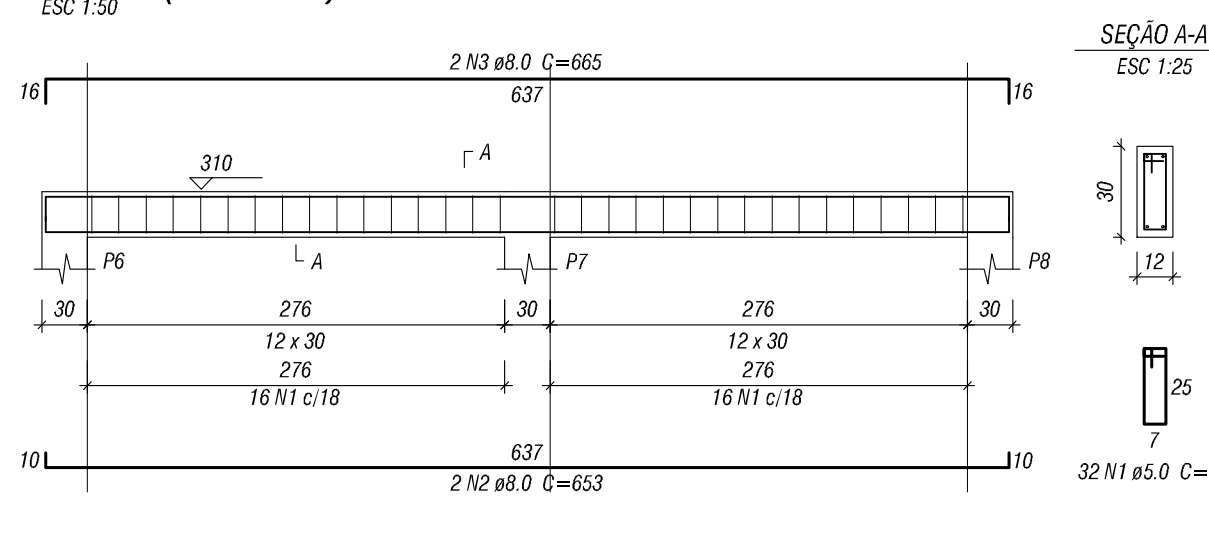
V201 (12 x 30)



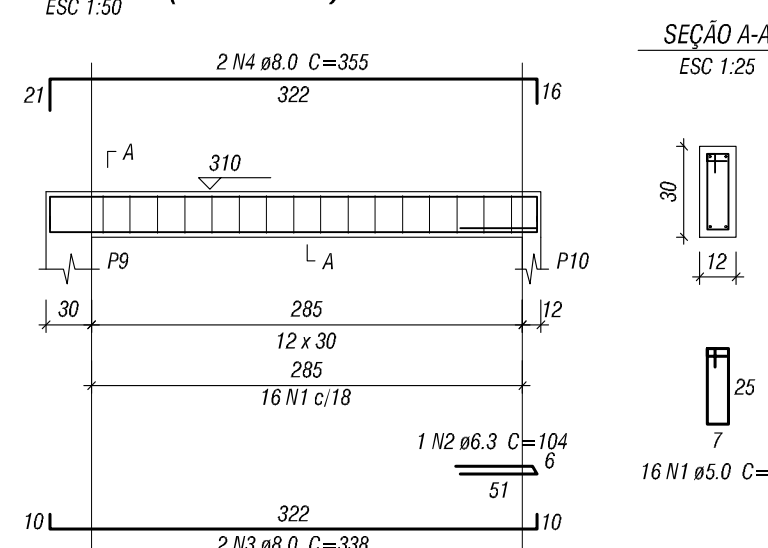
V202 (12 x 30)



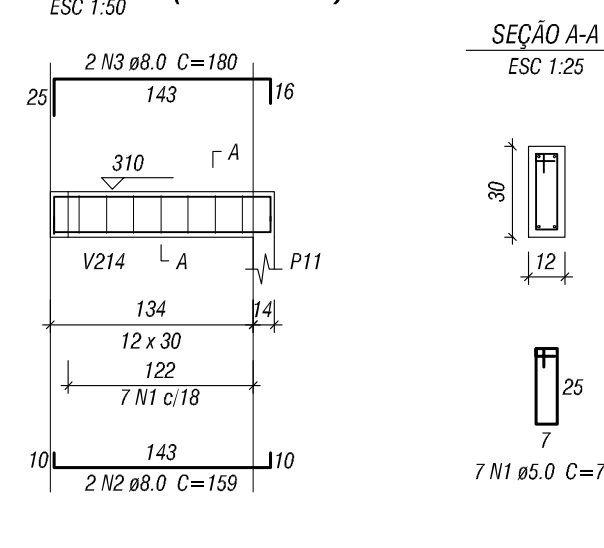
V203 (12 x 30)



V204 (12 x 30)



V205 (12 x 30)



Relação do aço						
ELEMENTO	AÇO	N	DIAM	Ø	UNID	C.TOTAL
V201	CA60	1	5.0	16	76	1218
	CA50	2	6.3	1	104	104
	CA50	3	8.0	2	338	676
	CA50	4	8.0	2	355	710
V202	CA60	1	5.0	32	76	2432
	CA50	2	8.0	2	653	1316
	CA50	3	8.0	2	665	1330
	CA50	4	8.0	2	665	1330
V203	CA60	1	5.0	32	76	2432
	CA50	2	8.0	2	653	1316
	CA50	3	8.0	2	665	1330
	CA50	4	8.0	2	665	1330
V204	CA60	1	5.0	16	76	1218
	CA50	2	6.3	2	104	104
	CA50	3	8.0	2	338	676
	CA50	4	8.0	2	355	710
V205	CA60	1	5.0	16	76	1218
	CA50	2	8.0	2	159	318
	CA50	3	8.0	2	180	360
	CA50	4	8.0	2	180	360
V206	CA60	1	5.0	16	76	1218
	CA50	2	8.0	2	159	318
	CA50	3	8.0	2	180	360
	CA50	4	8.0	2	180	360
V207	CA60	1	5.0	16	76	1218
	CA50	2	8.0	2	159	318
	CA50	3	8.0	2	180	360
	CA50	4	8.0	2	180	360
V208	CA60	1	5.0	16	76	1218
	CA50	2	8.0	2	159	318
	CA50	3	8.0	2	180	360
	CA50	4	8.0	2	180	360
V209	CA60	1	5.0	16	76	1218
	CA50	2	8.0	2	159	318
	CA50	3	8.0	2	180	360
	CA50	4	8.0	2	180	360
V210	CA60	1	5.0	16	76	1218
	CA50	2	8.0	2	159	318
	CA50	3	8.0	2	180	360
	CA50	4	8.0	2	180	360
V211	CA60	1	5.0	144	76	10844
	CA50	2	6.3	2	104	208
	CA50	3	8.0	4	924	3696
	CA50	4	8.0	2	925	1850
V212	CA60	1	5.0	16	76	1218
	CA50	2	8.0	2	159	318
	CA50	3	8.0	2	180	360
	CA50	4	8.0	2	180	360
V213	CA60	1	5.0	11	76	836
	CA50	2	8.0	2	248	496
	CA50	3	8.0	2	274	548
	CA50	4	8.0	2	283	566
V214	CA60	1	5.0	16	76	1218
	CA50	2	6.3	1	104	104
	CA50	3	8.0	2	350	700
	CA50	5	10.0	2	207	414
V215	CA60	1	5.0	30	80	2400
	CA50	2	10.0	2	567	1134
	CA50	3	8.0	2	572	1144
	CA50	4	8.0	2	572	1144
V216	CA60	1	5.0	20	80	1600
	CA50	2	10.0	3	416	1248
	CA50	3	8.0	3	454	1362
	CA50	5	10.0	11	76	836
V217	CA60	1	5.0	20	80	1600
	CA50	2	8.0	2	248	496
	CA50	3	8.0	2	273	546
	CA50	4	8.0	2	282	564
V218	CA60	1	5.0	16	76	1218
	CA50	2	6.3	1	104	104
	CA50	3	8.0	2	356	712
	CA50	5	10.0	1	224	224
V219	CA60	1	5.0	30	80	2400
	CA50	2	10.0	2	566	1132
	CA50	3	8.0	2	572	1144
	CA50	4	8.0	2	572	1144
V220	CA60	1	5.0	16	76	1218
	CA50	2	6.3	1	104	104
	CA50	3	8.0	2	350	700
	CA50	5	10.0	1	224	224
V221	CA60	1	5.0	20	80	1600
	CA50	2	10.0	3	416	1248
	CA50	3	10.0	2	454	1362
	CA50	5	10.0	11	76	836
V222	CA60	1	5.0	11	76	836
	CA50	2	8.0	2	248	496
	CA50	3	8.0	2	273	546
	CA50	4	8.0	2	282	564
V223	CA60	1	5.0	16	76	1218
	CA50	2	6.3	1	104	104
	CA50	3	8.0	2	350	700
	CA50	4	8.0	2	356	712
V224	CA60	1	5.0	28	76	2128
	CA50	2	10.0	2	566	1132
	CA50	3	10.0	2	566	1132
	CA50	4	10.0	2	566	1132
V225	CA60	1	5.0	28	76	2128
	CA50	2	10.0	2	567	1134
	CA50	3	10.0	2	567	1134
	CA50	4	10.0	2	567	1134
V226	CA60	1	5.0	16	76	1218
	CA50	2	6.3	1	106	106
	CA50	3	8.0	2	274	548
	CA50	5	10.0	2	357	714
V227	CA60	1	5.0	16	76	1218
	CA50	2	6.3	1	106	106
	CA50	3	8.0	2	274	548
	CA50	6	10.0	2	381	762
V228	CA60	1	5.0	20	80	1600
	CA50	2	10.0	3	416	1248
	CA50	3	10.0	3	454	1362
	CA50	5	10.0	11	76	836
V229	CA60	1	5.0	16	76	1218
	CA50	2	6.3	1	106	106
	CA50	3	8.0	2	274	548
	CA50	6	10.0	2	381	762
V230	CA60	1	5.0	28	76	2128
	CA50	2	10.0	2	567	1134
	CA50	3	10.0	2	567	1134
	CA50	5	10.0	11	76	836
V231	CA60	1	5.0	16	76	1218
	CA50	2	8.0	2	248	496
	CA50	3	8.0	2	274	548
	CA50	5	10.0	4	81	324
V232	CA60	1	5.0	16	76	1218
	CA50	2	8.0	2	159	318
	CA50	3	8.0	2	180	360
	CA50	4	8.0	2	180	360
V233	CA60	1	5.0	16	76	1218
	CA50	2	8.0	2	159	318
	CA50	3	8.0	2	180	360
	CA50	4	8.0	2	180	360