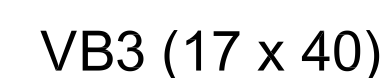
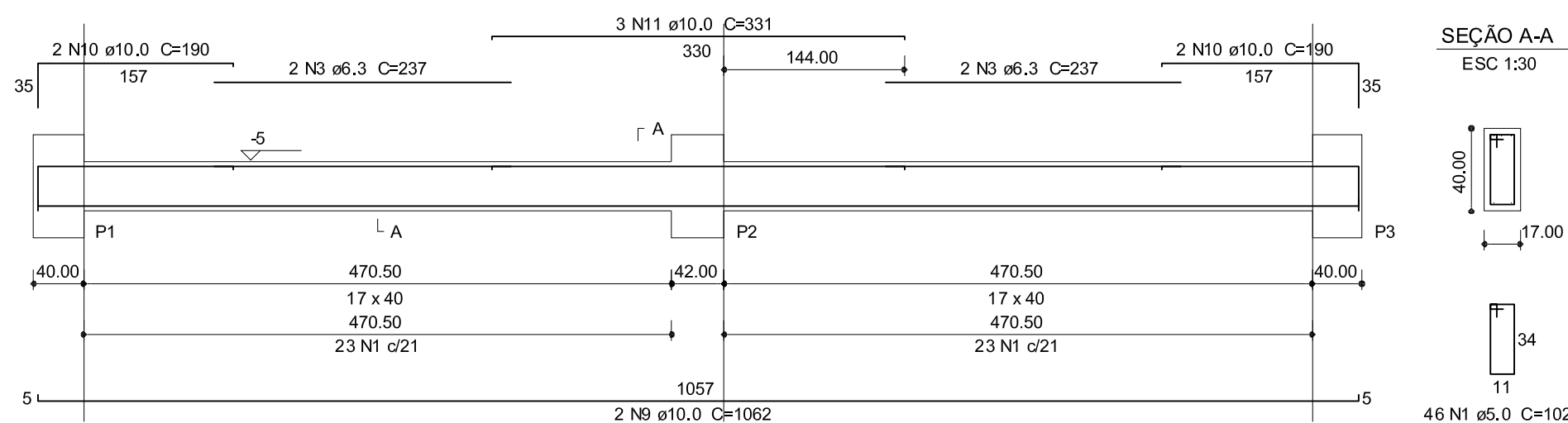
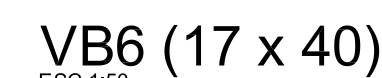
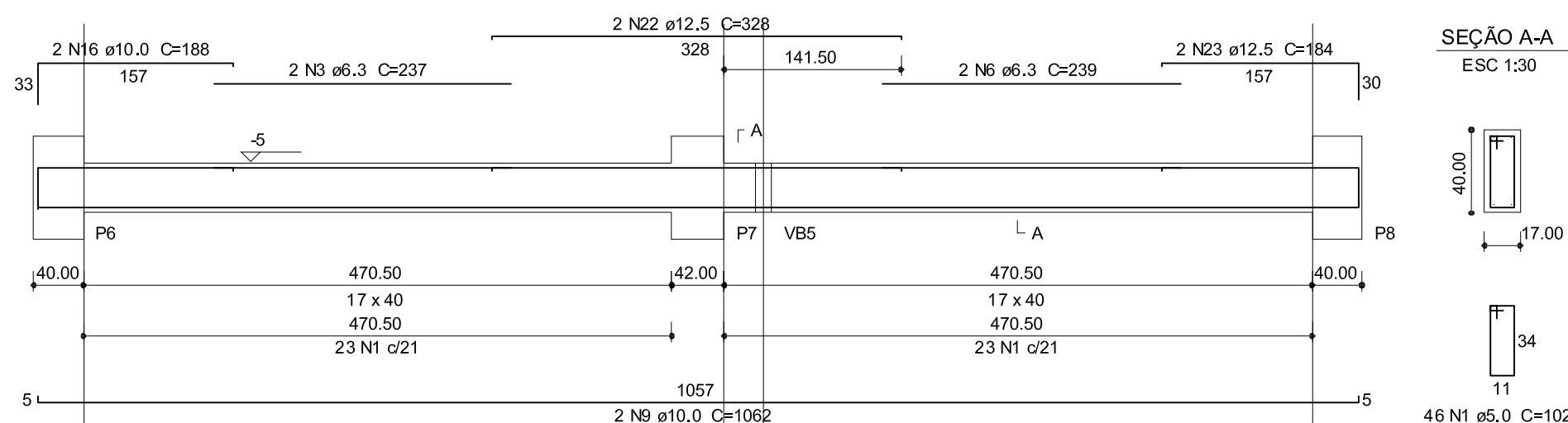


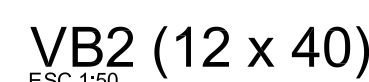
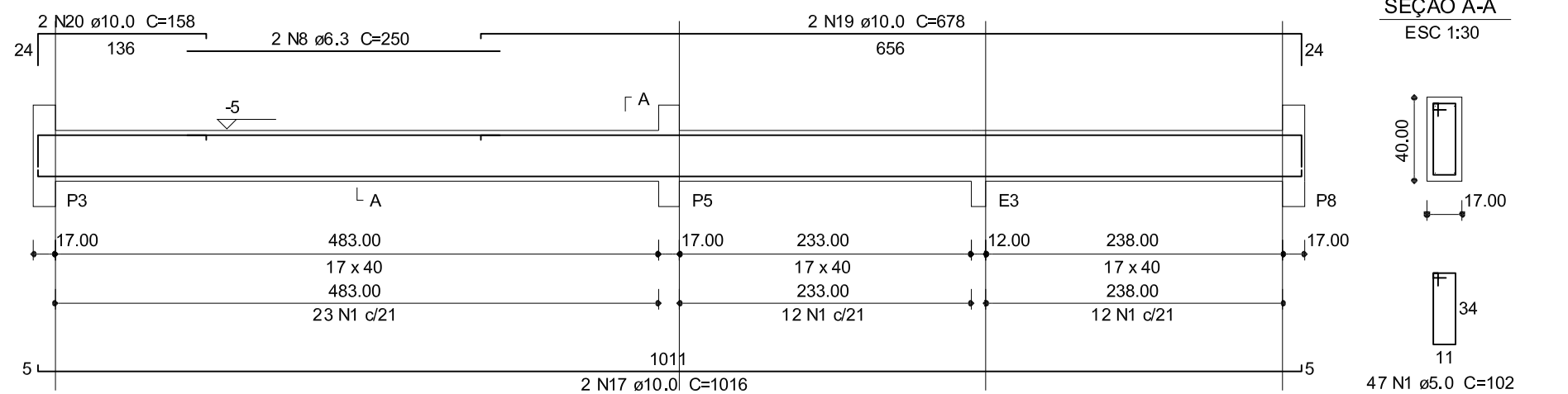
ESC 1:50



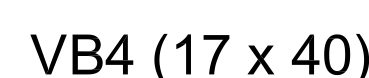
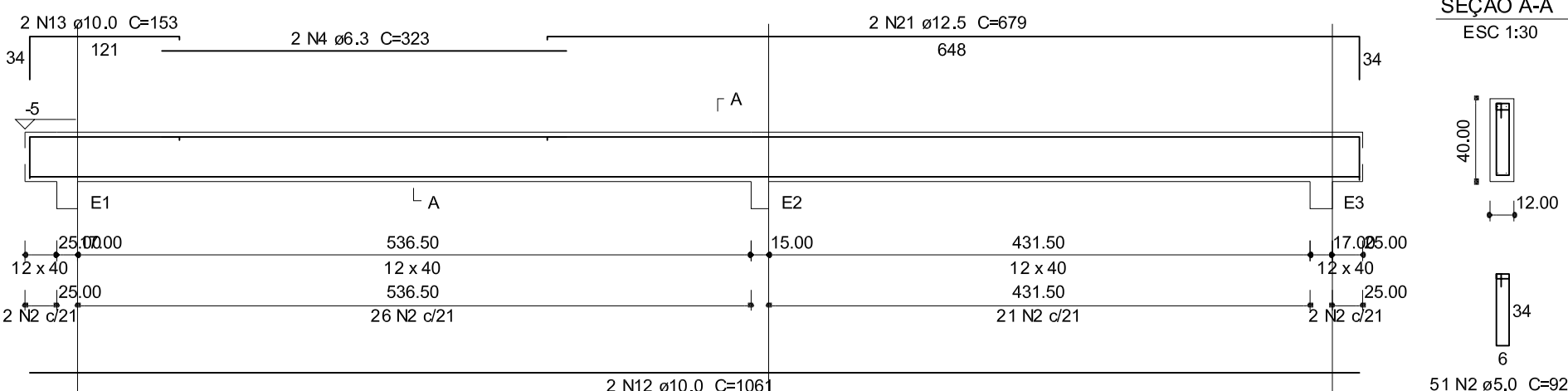
ESC 1:50



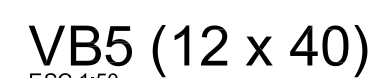
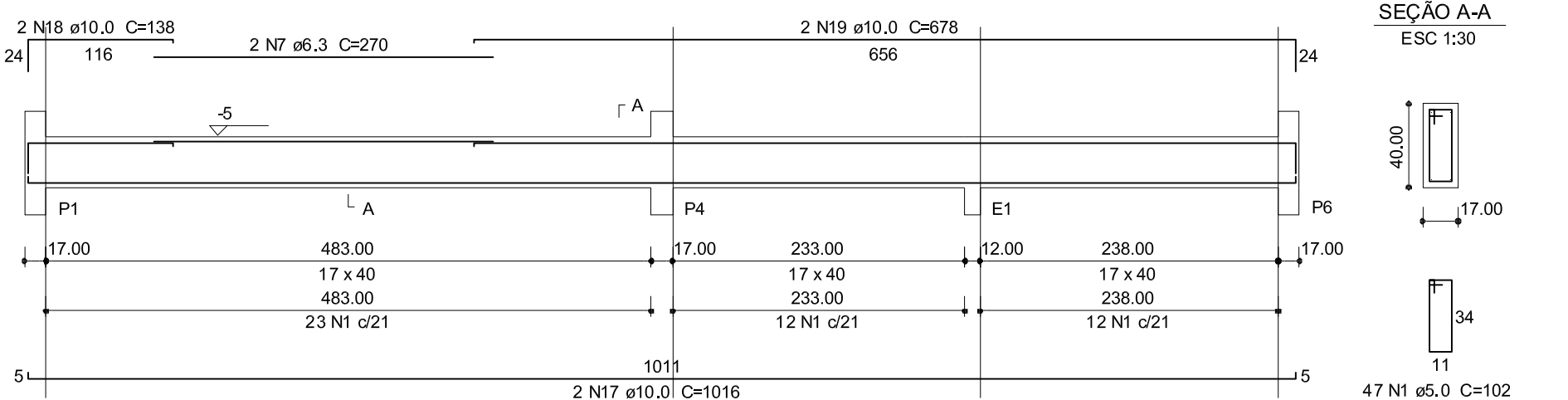
ESC 1:50



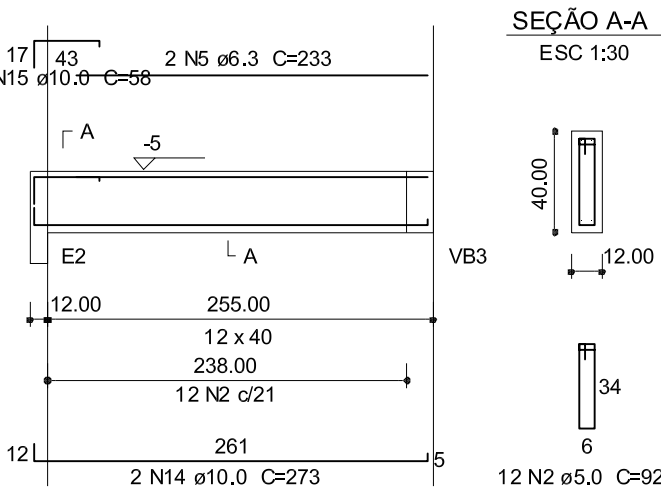
ESC 1:50



V D4
ESC 1:50



ESC 1:50

Relação do aço

VB1 VB4		VB2 VB5		VB3 VB6	
AÇO	N	DIAM	Q	UNIT	C.TOTAL (cm)
CA60	1	5.0	186	102	18972
	2	5.0	63	92	5796
	3	6.3	63	237	1422
	4	6.3	2	323	646
	5	6.3	2	233	466
	6	6.3	2	238	478
	7	6.3	2	270	540
	8	6.3	2	250	500
	9	10.0	4	1062	4248
	10	10.0	4	190	760
	11	10.0	3	331	993
	12	10.0	2	1061	2122
	13	10.0	2	153	306
	14	10.0	2	273	546
CA50	15	10.0	2	58	116
	16	10.0	2	188	376
	17	10.0	4	1016	4064
	18	10.0	2	138	276
	19	10.0	4	678	2712
	20	10.0	2	158	316
	21	12.5	2	679	1358
	22	12.5	2	328	656
	23	12.5	2	184	368

NOTAS:

- EM CASO DE DÚVIDAS, CONSULTAR O AUTOR DESTE PROJETO
- PARA A BOA EXECUÇÃO, CONSULTAR O PROJETO ARQUITETÔNICO
- RESISTÊNCIA CARACTERÍSTICA DO CONCRETO $F_{ck} = 25 \text{ MPa}$
- AS COTAS PREVALECEM SOBRE A ESCALA
- VERIFICAR AS MEDIDAS NA OBRA
- TODAS AS MEDIDAS ESTÃO EM CENTÍMETROS
- O NÍVEL 0,00m EQUIVALE AO NÍVEL 0,00m DO PROJETO ARQUITETÔNICO
- EXALAR E PASSAR PARA TUE COTAS DE ÁGUA, ESGOTO, ELÉTRICA, INCÊNDIO, ETC.
- ANTES DA CONCRETAGEM MOLHAR AS FORMAS
- MANTER ÚMIDAS AS PARTES CONCRETADAS DURANTE SEUS DIAS NO MÍNIMO
- DIREITOS AUTORAIS RESERVADOS

Resumo do aço

AÇO	DIAM	C.TOTAL (m)	PESO + 10 % (kg)
CA50	6.3	40.6	10.9
	10.0	168.4	114.2
	12.5	23.9	25.2
CA60	5.0	247.7	42
PESO TOTAL			
CA50	150.3		
CA60	42		

Vol. de concreto total (C-25) = 3.47 m³
Área de forma total = 52.62 m²

Área de forma total = 52,62 m²

[illegible]