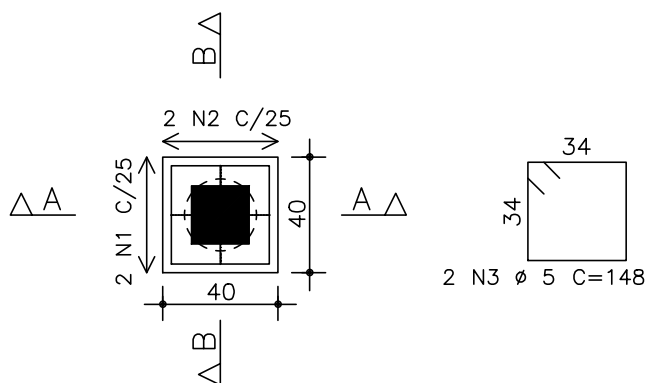
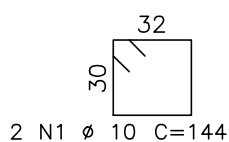
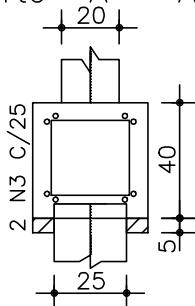


B1
(Esc 1:25)

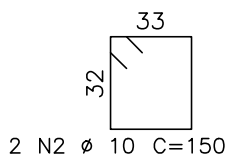
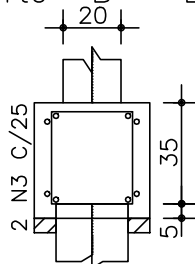
11 x



Corte A - A



Corte B - B

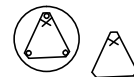


BROCAS e BLOCOS

AÇO	POS	BIT (mm)	QUANT	COMPRIMENTO		
				UNIT (cm)	TOTAL (cm)	
B1 (X11)						
50A	1	10	22	144	3168	
50A	2	10	22	150	3300	
60B	3	5	22	148	3256	
B2 (X5)						
50A	1	12.5	15	172	2580	
60B	2	5	25	142	3550	
60B	3	5	15	308	4620	
60B	4	5	15	125	1875	
B3 (X3)						
50A	1	10	24	170	4080	
50A	2	10	24	175	4200	
60B	3	5	48	165	7920	
60B	4	5	48	165	7920	
60B	5	5	12	248	2976	
brocas (X33)						
50A	1	8	99	200	19800	
60B	2	4,2	330	65	21450	

BROCA

33 x



10 Ø 4,2mm C/20
C=65

BROCA PROFUNDIDADE MÍNIMA = 3,0m

3 Ø 8,0mm C=200

BROCAS e BLOCOS

RESUMO AÇO CA 50-60			
AÇO	BIT (mm)	COMPR (m)	PESO (kg)
60B	5	321	51
50A	10	147	93
50A	12.5	26	26
60B	4,2	215	24
50A	8	198	100
Peso Total 60B =		51 kg	
Peso Total 50A =		119 kg	