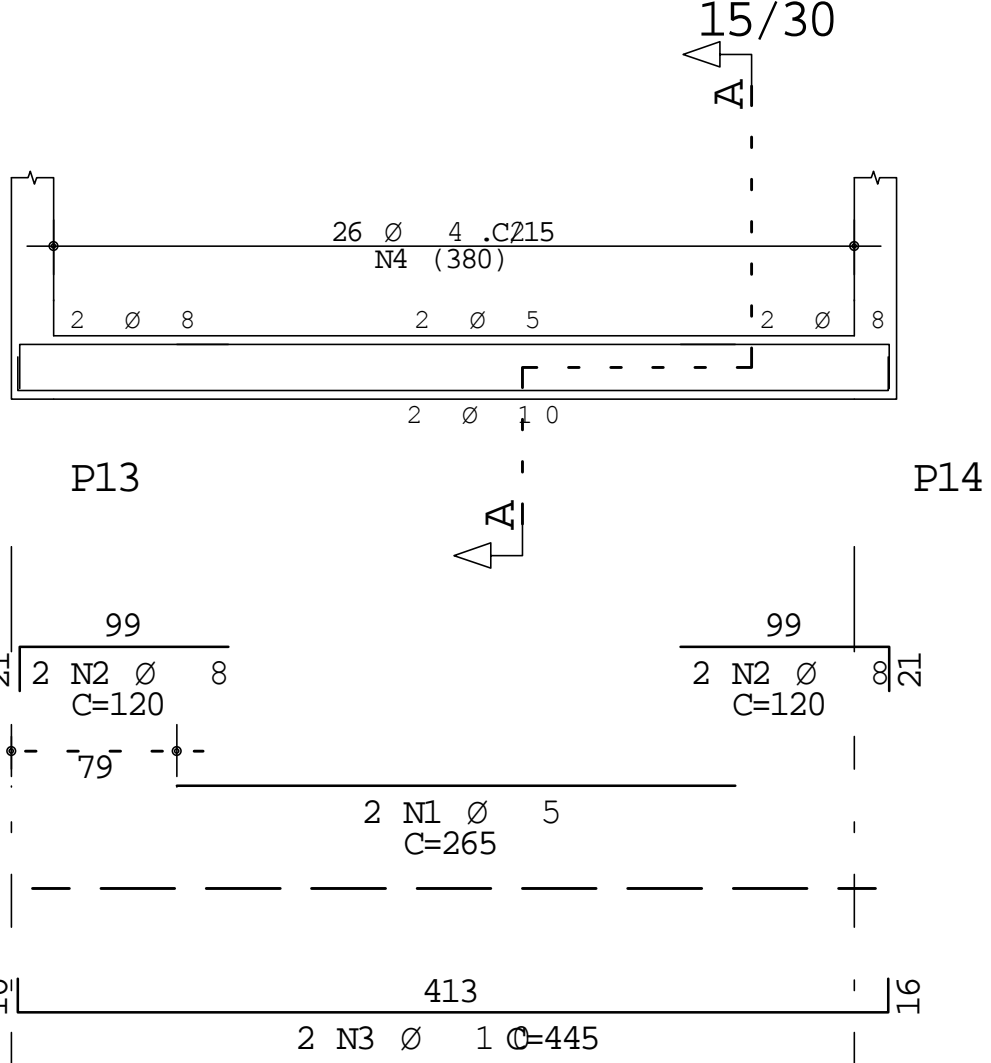
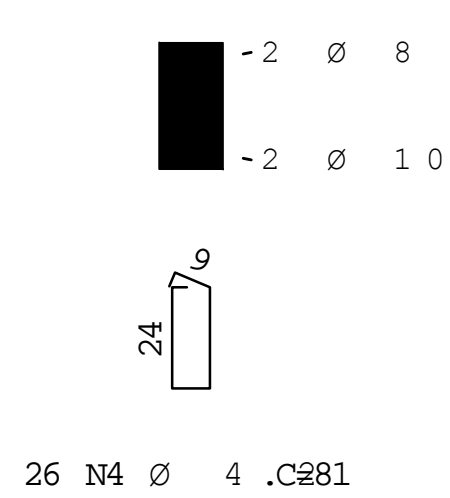


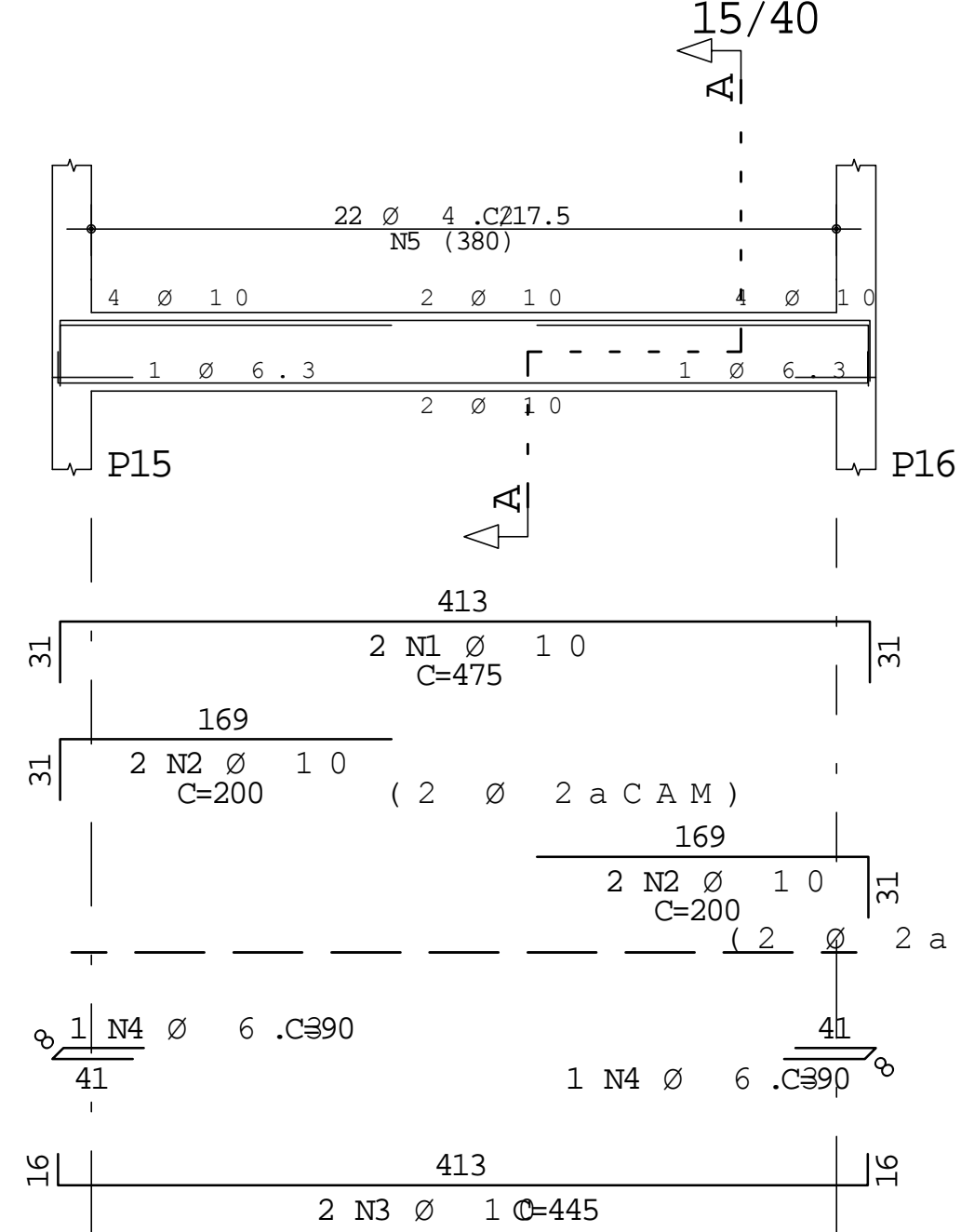
VB7



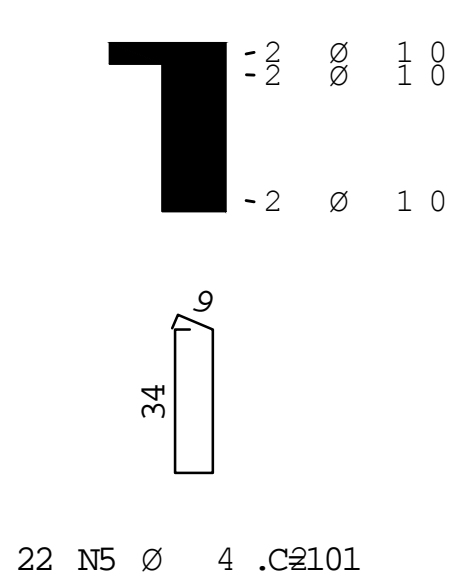
Corte A



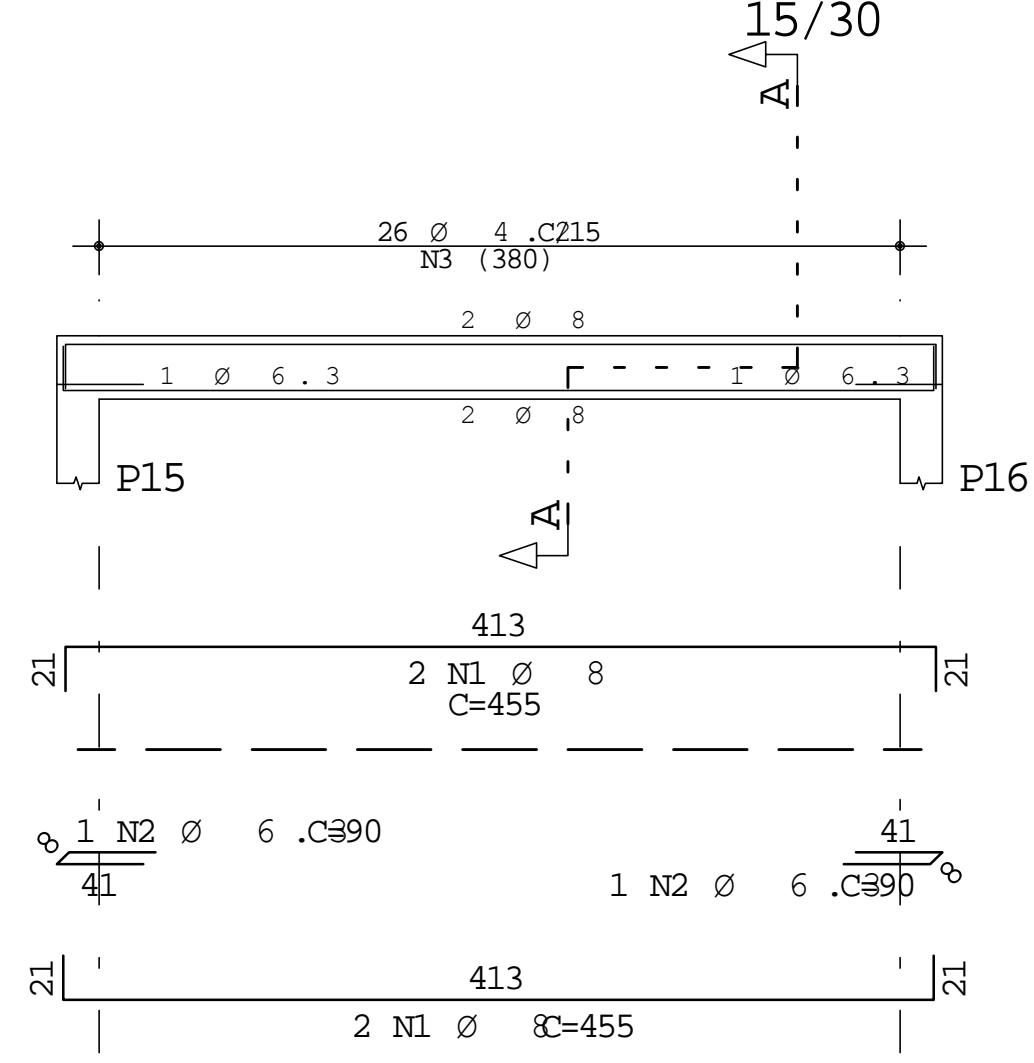
VR6



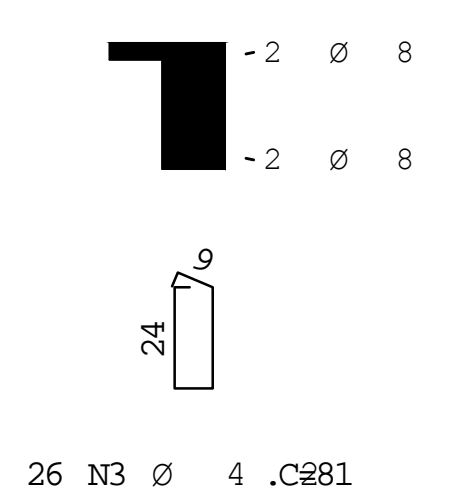
Corte A



VC5



Corte A



	A	Ç	Ø	POS	BIT (mm)	QUANT	COMPRIMENTO	
							UNIT (cm)	TOTAL (cm)
VB7	60B	1		5		2	265	530
	50A	2		8		4	120	480
	50A	3		10	2	445	890	
	60B	4		4.2	26	81	2106	
VC5	50A	1		8		4	455	1820
	50A	2		6.3		2	90	180
	60B	3		4.2	26	81	2106	
VR6	50A	1		10		2	475	950
	50A	2		10		4	200	800
	50A	3		10	2	445	890	
	50A	4		6.3	2	90	180	
	60B	5		4.2	22	101	2222	

RESUMO AÇO CA 50 - 6				
AÇO	BIT (mm)	COMPR (m)	PESO (kg)	
60B	4.2	64	7	
60B	5	5	1	
50A	6.3	4	1	
50A	8	23	9	
50A	10	35	22	
Peso Total		60B =	8 kg	
Peso Total		50A =	32 kg	

					OBRA: N.º				
CLIENTE					DES.: N.º				
UENP CCP									
OBRA					07/09				
BLOCO DE SALAS									
BIOLOGIA/GEOGRAFIA/MATEMÁTICA/PÓS-GRADUAÇÃO									
TÍTULO					REV.: N.º				
PROJETO ESTRUTURAL									
ABRIGO DOS RESERVATÓRIOS									
-ARMAÇÃO: VIGAS									
DATA	25/10/2017	ESCALA	1/50	PCV	25 MPA	DESENHO	VERIF.:	DZO: 01	LINCOLN