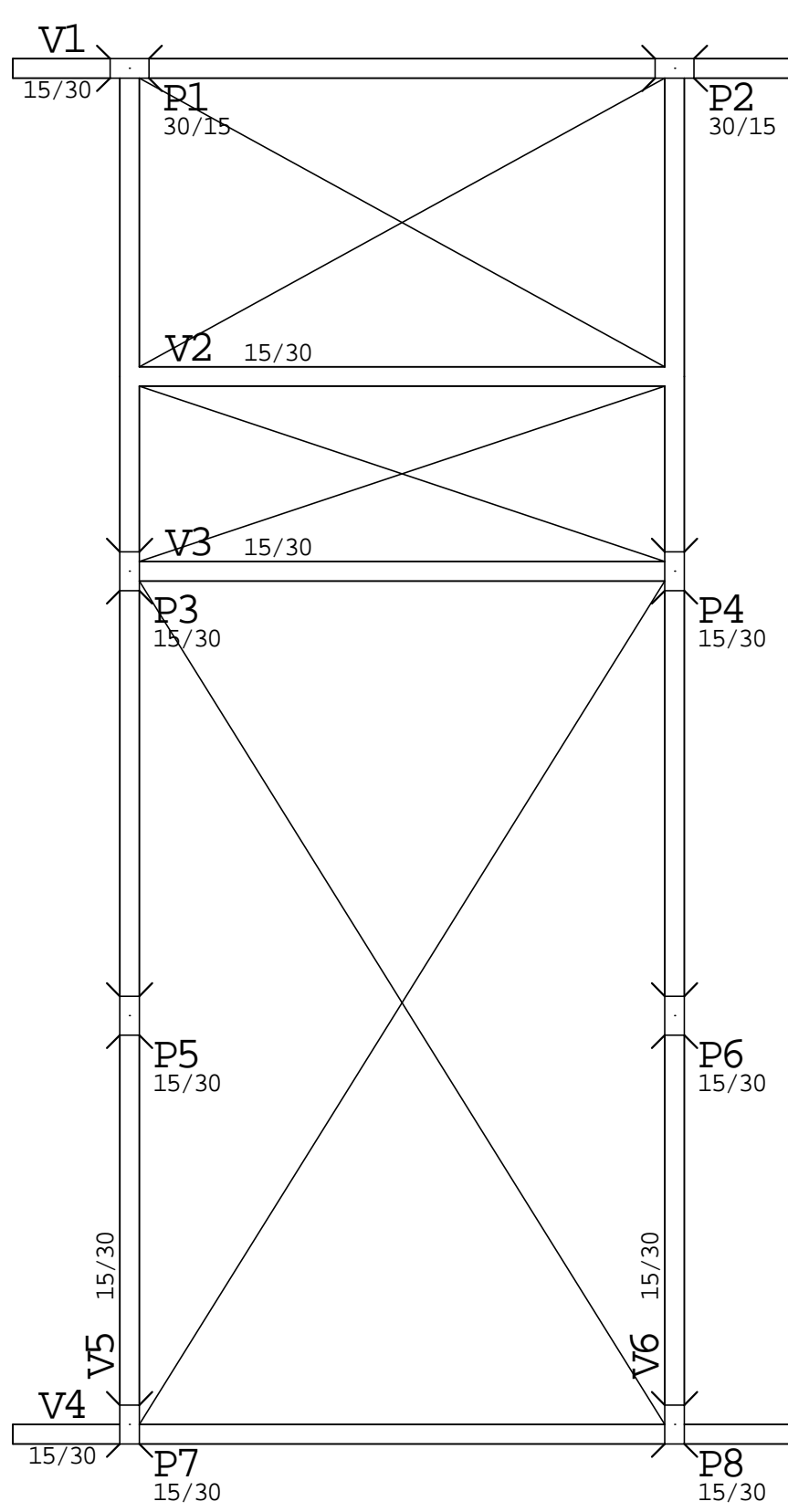
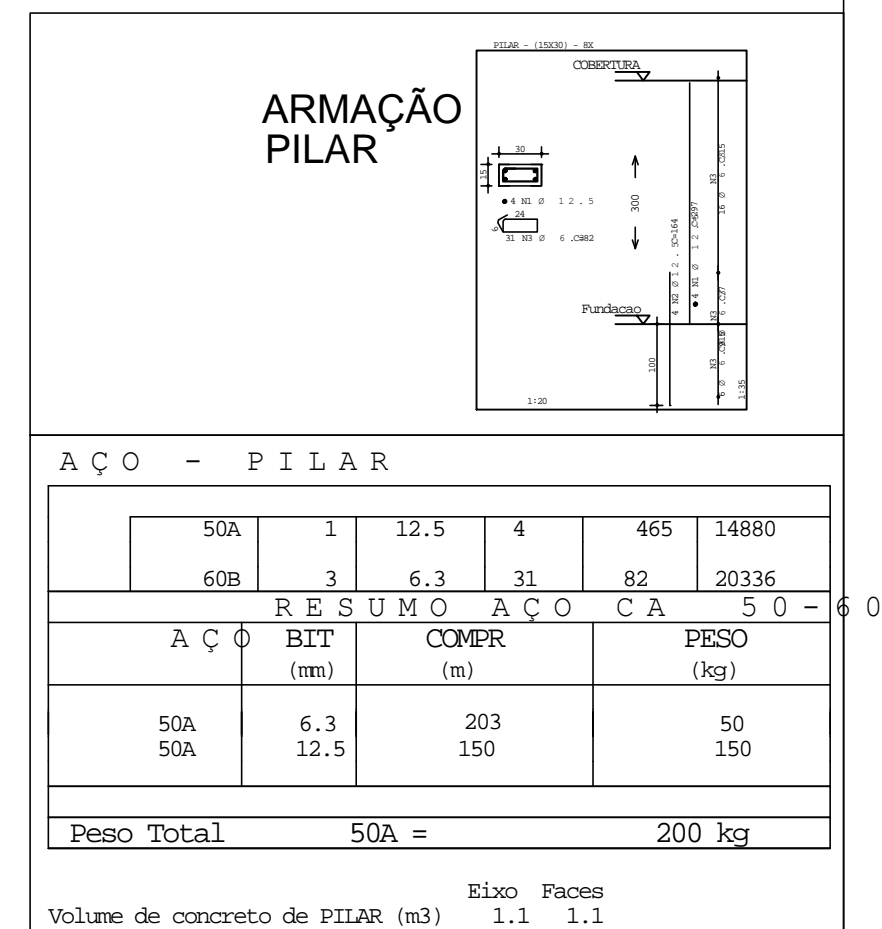


LAJE COBERTURA
Laje treliçada pre moldada



FORMA
VIGA BALDRAME



Elem	Caso 1
	Fz
P1	5.6
P2	5.6
P3	9.1
P4	9.1
P5	5.1
P6	5.1
P7	5.0
P8	5.0
Soma	49.6

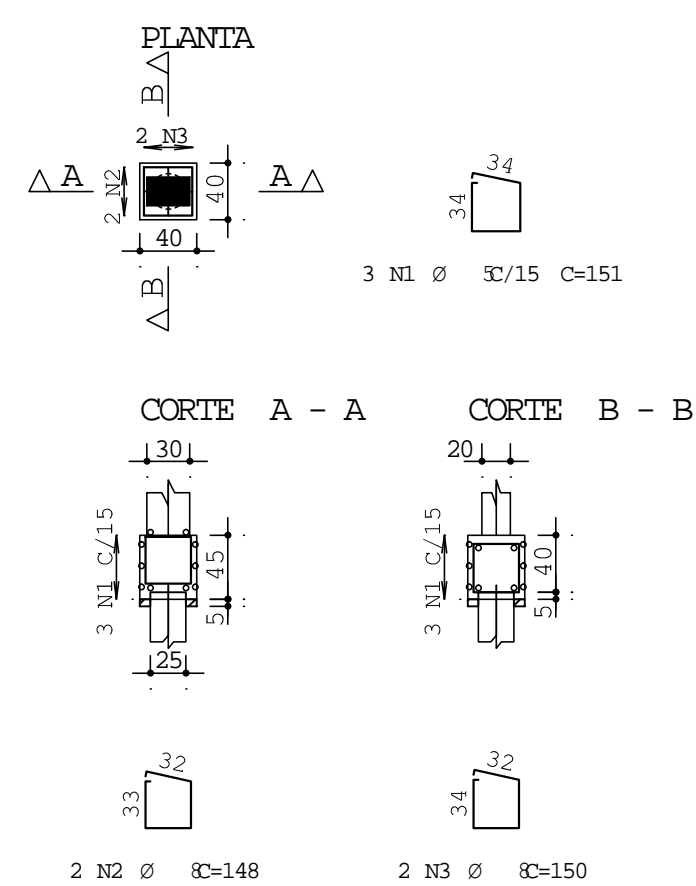
	A	C	P	O	S	BIT (mm)	QUANT	COMPRIMENTO	
								UNIT (cm)	TOTAL (cm)
COBERTURA - Armadura negativa horizontal									
	50A	1				6,3	50	163	8150
	50A	2				6,3	3	130	260
	50A	3				6,3	32	125	400
	50A	4				6,3	32	110	3520
	50A	5				6,3	48	130	6240
	50A	6				6,3	3	28	105
	60B	7				5	11	1140	12540
V14									
	50A	1				8	2	635	1270
	50A	2				8	2	625	1250
	60B	3				4,2	39	81	3159
V15	50A	1				8	3	205	615
	50A	2				10	3	185	1570
	50A	3				10	1	165	165
	50A	4				8	2	210	420
	50A	5				8	2	700	1400
	50A	6				10	2	840	840
	60B	7				4,2	65	90	5850
	60B	8				4,2	4	335	1340
	90B	9				4,2	2	363	726
	60B	10				4,2	2	402	804
V16									
	50A	1				8	3	205	615
	50A	2				10	3	185	1570
	50A	3				10	1	165	165
	50A	4				8	2	210	420
	50A	5				10	2	700	1400
	50A	6				10	2	840	840
	60B	7				4,2	65	90	5850
	60B	8				4,2	4	335	1340
	90B	9				4,2	2	363	726
	60B	10				4,2	2	402	804

RESUMO AÇO CA 50 -			
A Ç Ø	BIT (mm)	COMPR (m)	PESO (Kg)
60B	4,2	206	22
60A	5	125	19
50A	6,3	251	62
50A	8	74	29
50A	10	52	32
Peso Total	60B =		42 kg
Peso Total	50A =		122 kg

	Eixo	Faces
Volume de concreto de VIGAS (m3)	1.2	1.1
Taxa de armadura (kg/m3)	68.9	74.3

ARMAÇÃO
BLOCOS SOBRE ESTACAS

B1
(ESCALA 1:50) 8 x

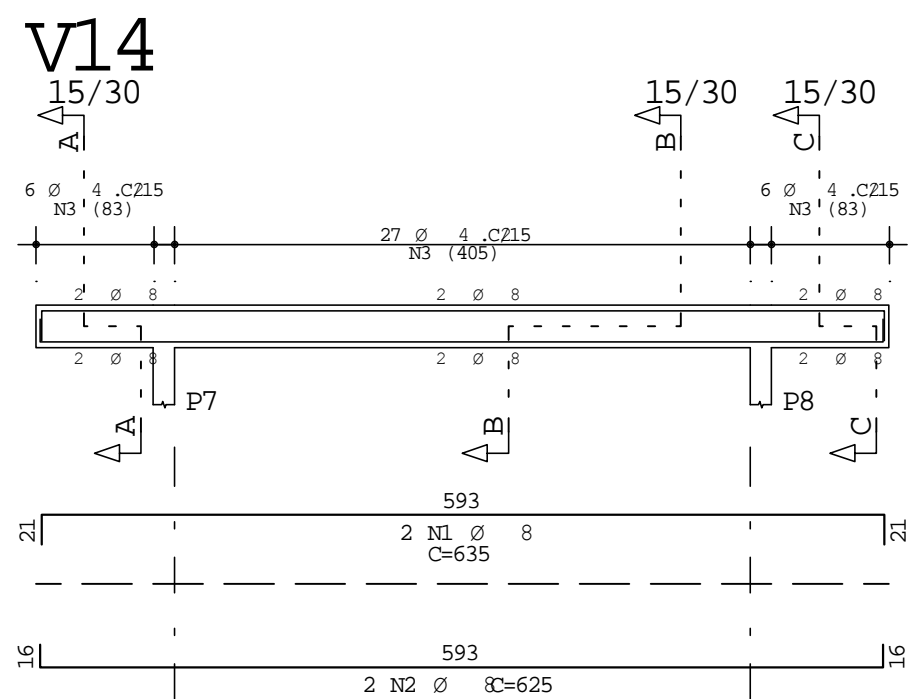


A	C	D	POS	BIT (nm)	QUANT (cm)	COMPRIMENTO	
						UNIT (cm)	TOTAL (cm)
B1 (X8)							
	60B	1	5	24	151	3624	
	50A	2	8	16	148	2368	
	50A	3	8	16	150	2400	

RESUMO AÇO CA 50 - 60			
AÇO	BIT (mm)	COMPR (m)	PESO (kg)
60B	5	36	6
50A	8	48	19
Peso Total	60B =		6 kg
Peso Total	50A =		19 kg

ESTACAS:
BROCA Ø 25 DE 4,0m
3Ø 8,0 c=2,0m
Estribro Ø 5,0 cada 20

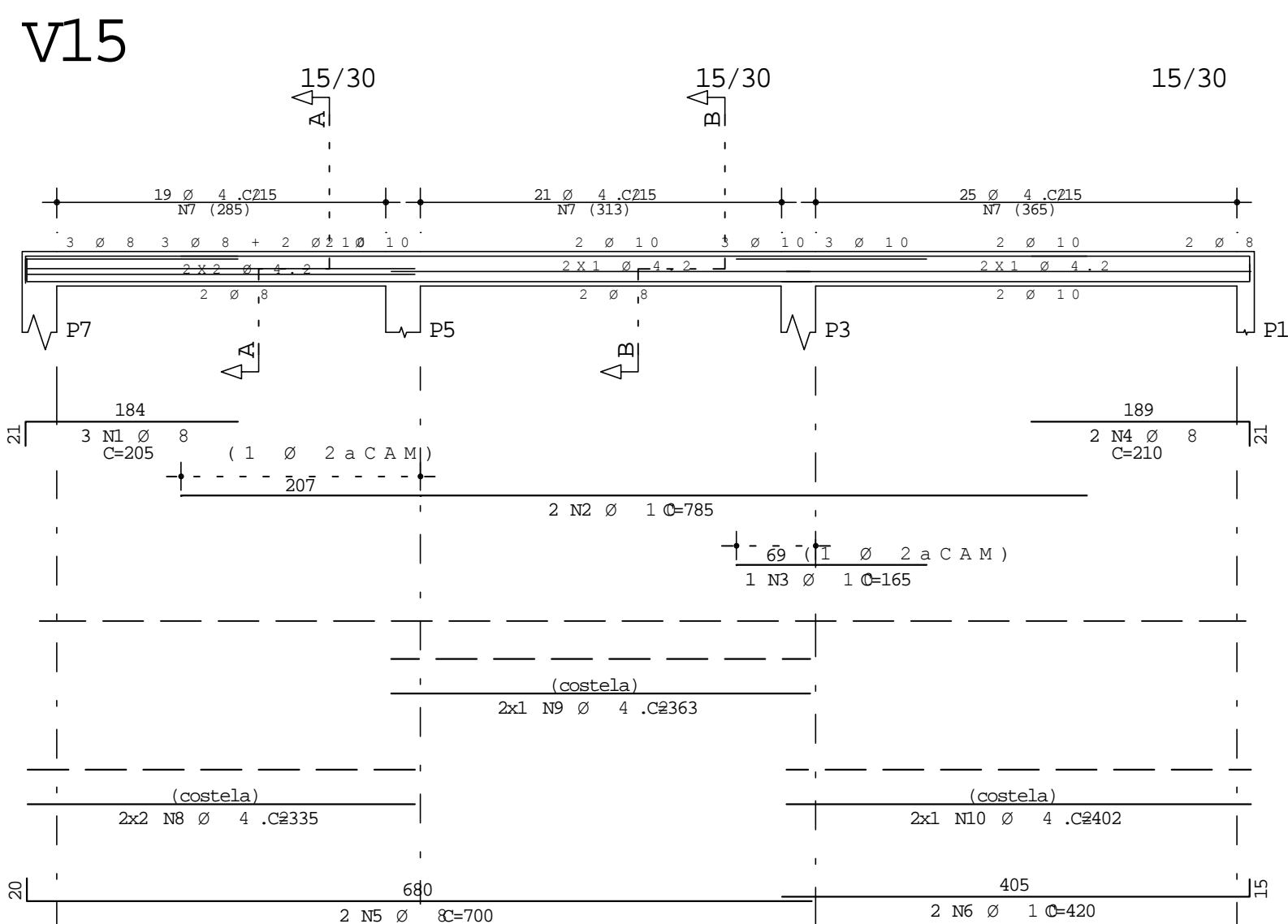
Ø 8,0 = 48 m ==> 20 kg
Ø 5,0 = 50m ==> 8,0 kg



Corte A Corte B Corte C

6 N3 Ø 4 .C#1 27 N3 Ø 4 .C#1 6 N3 Ø 4 .C#1

ARMAÇÃO VIGAS



Corte A

2 10 2 2 8

24 9

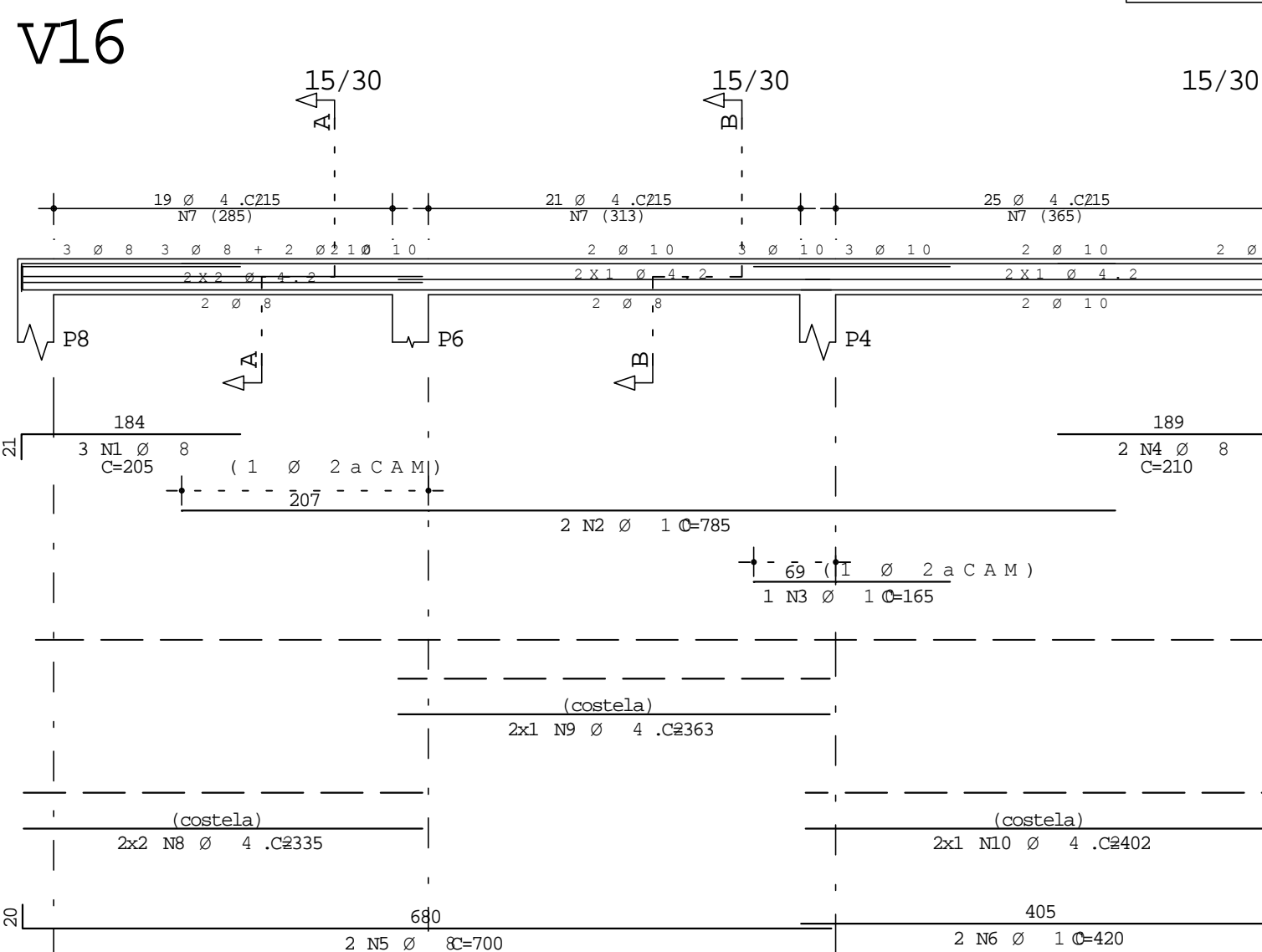
19 N7 Ø 4 , C90

Corte B

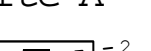
2 10 2 2 8

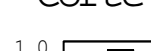
24 9

46 N7 Ø 4 , C90



Corte A Corte B





19 N7 Ø 4 .C90 46 N7 Ø 4 .C90

					OBRA N.º
CLIENTE UENP CLM					DES. N.º
OBRA N I T E C - A M P L I A Ç Ã O					TRU
TÍTULO ESTRUTURAL					01
COBERTURA - Armadura negativa horizontal V14 / V15 / V16					/2
					REV. N.º
DATA 20/10/2018	ESCALA 1:50	FOK 250	DESENHO	VISUF.	END.º