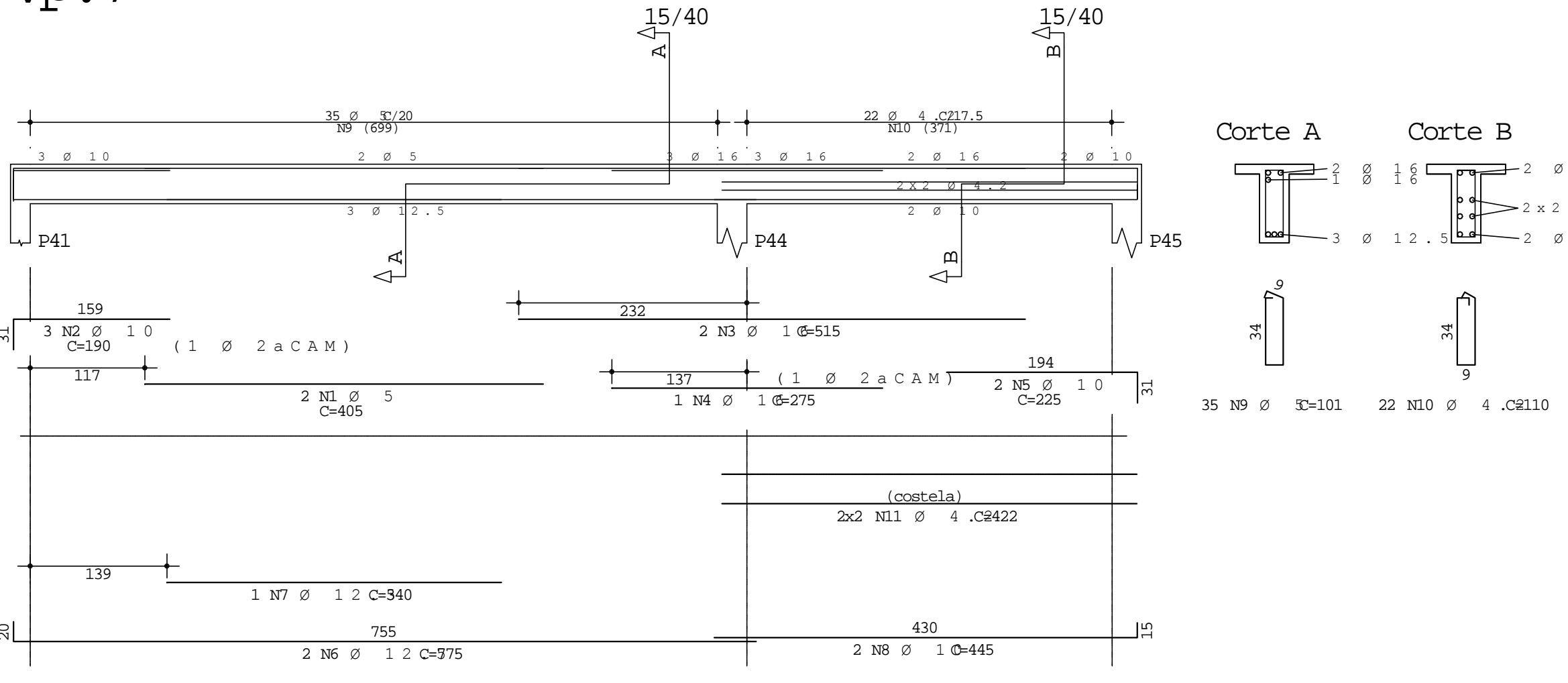
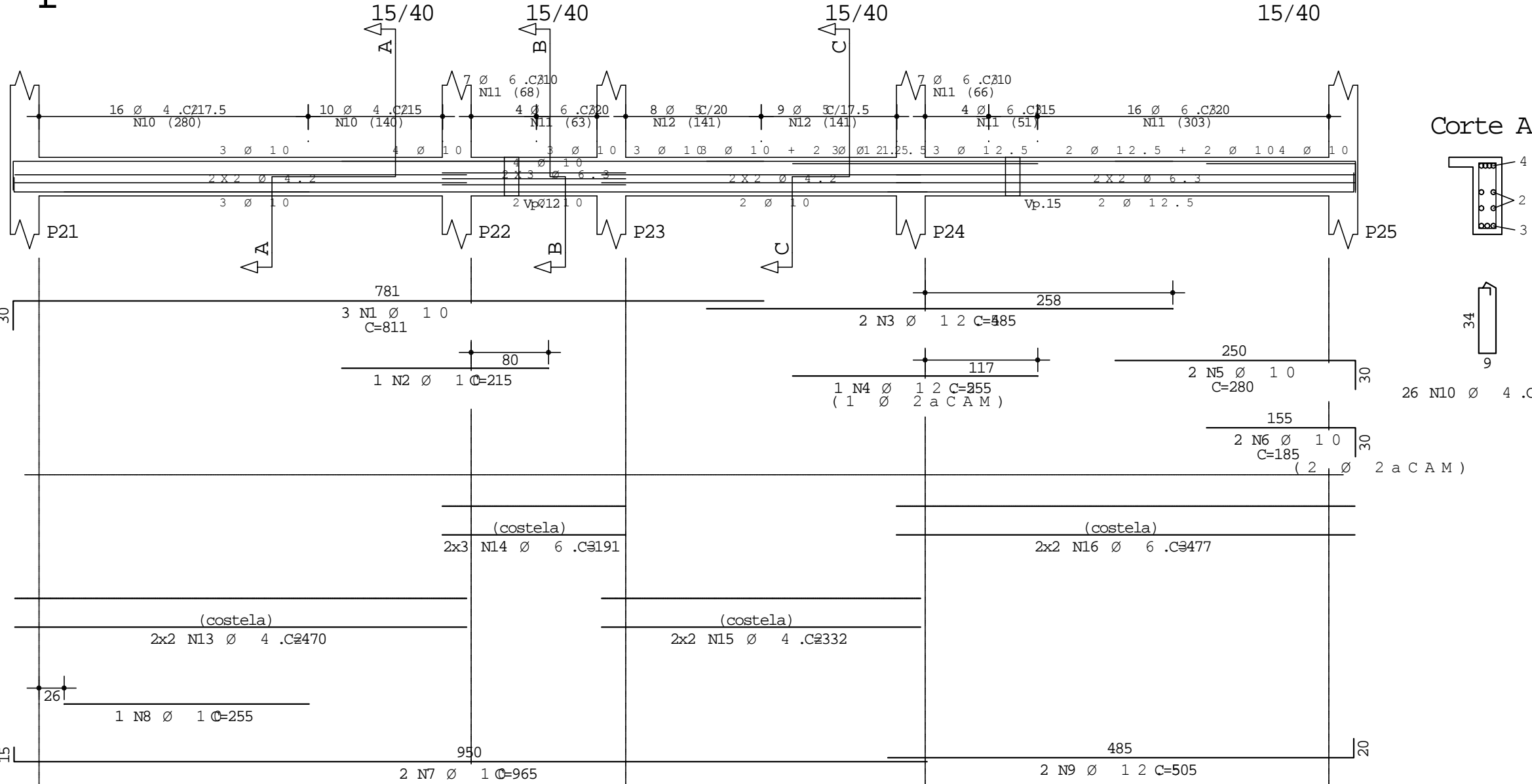


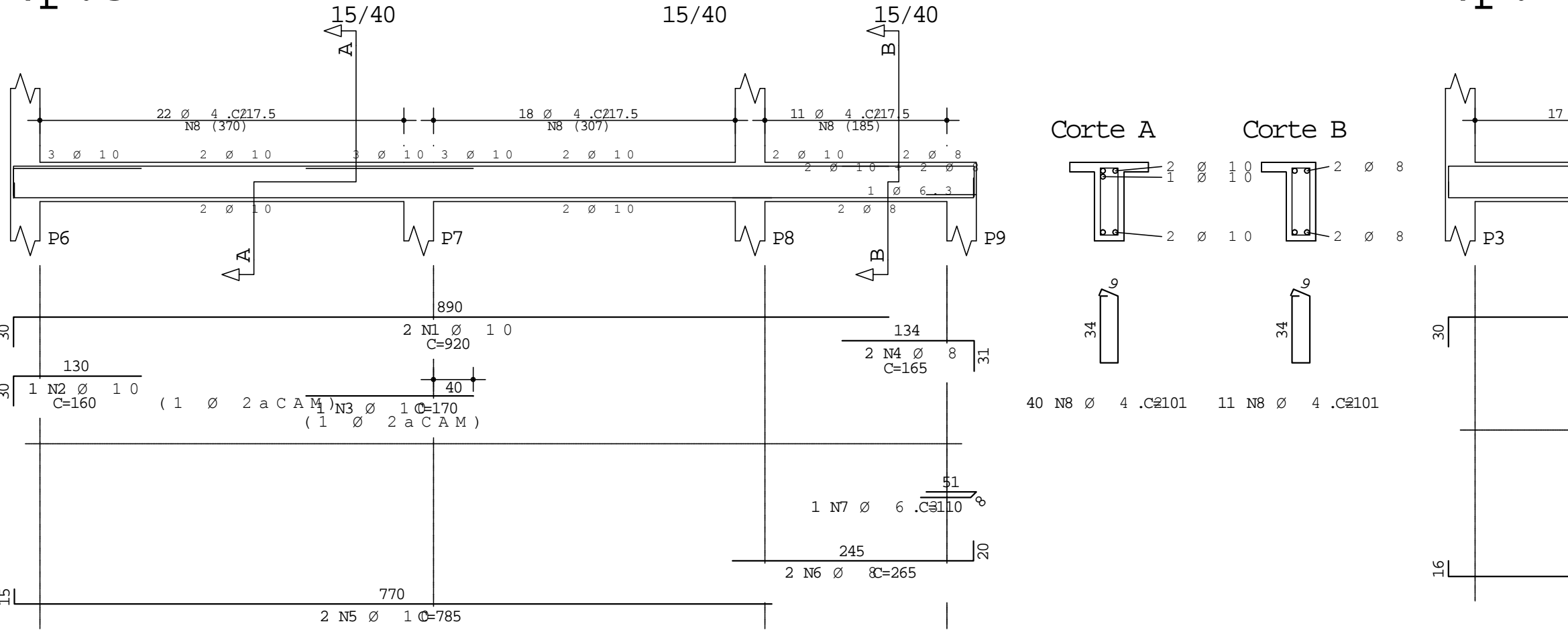
Vp.7



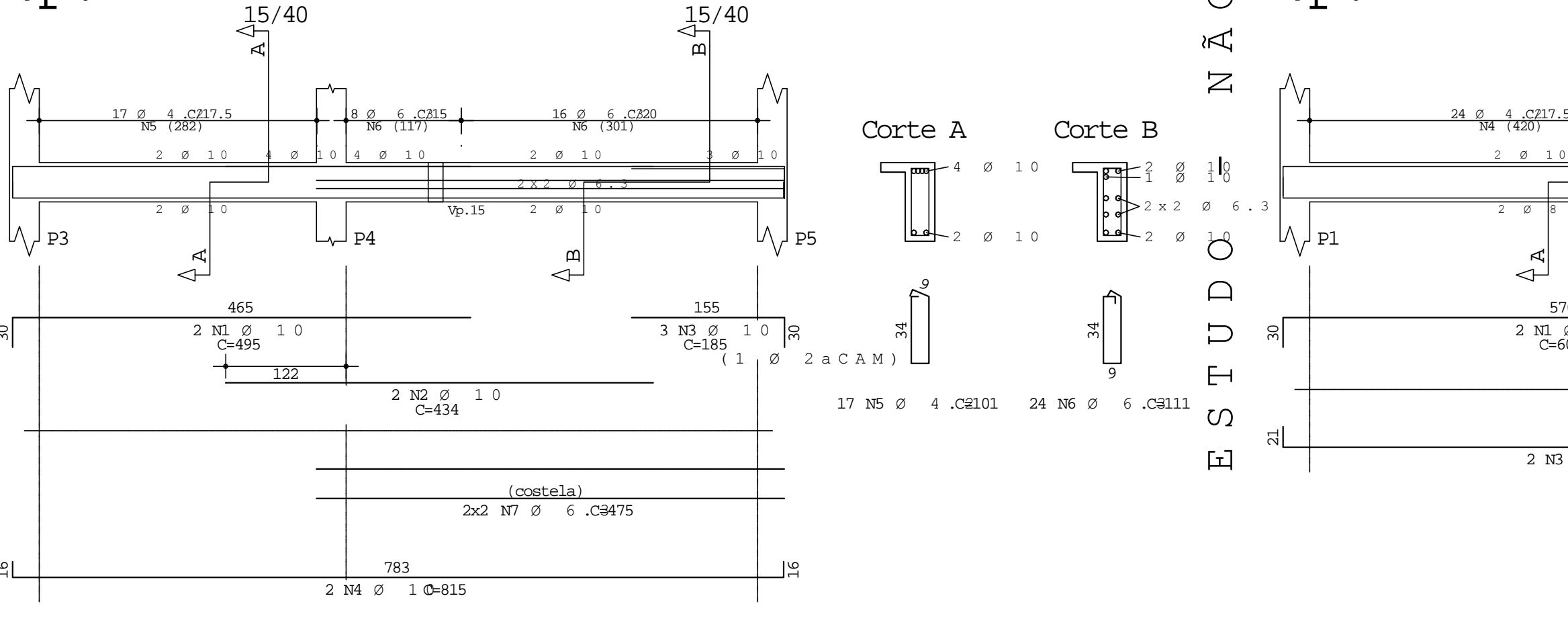
Vp.5



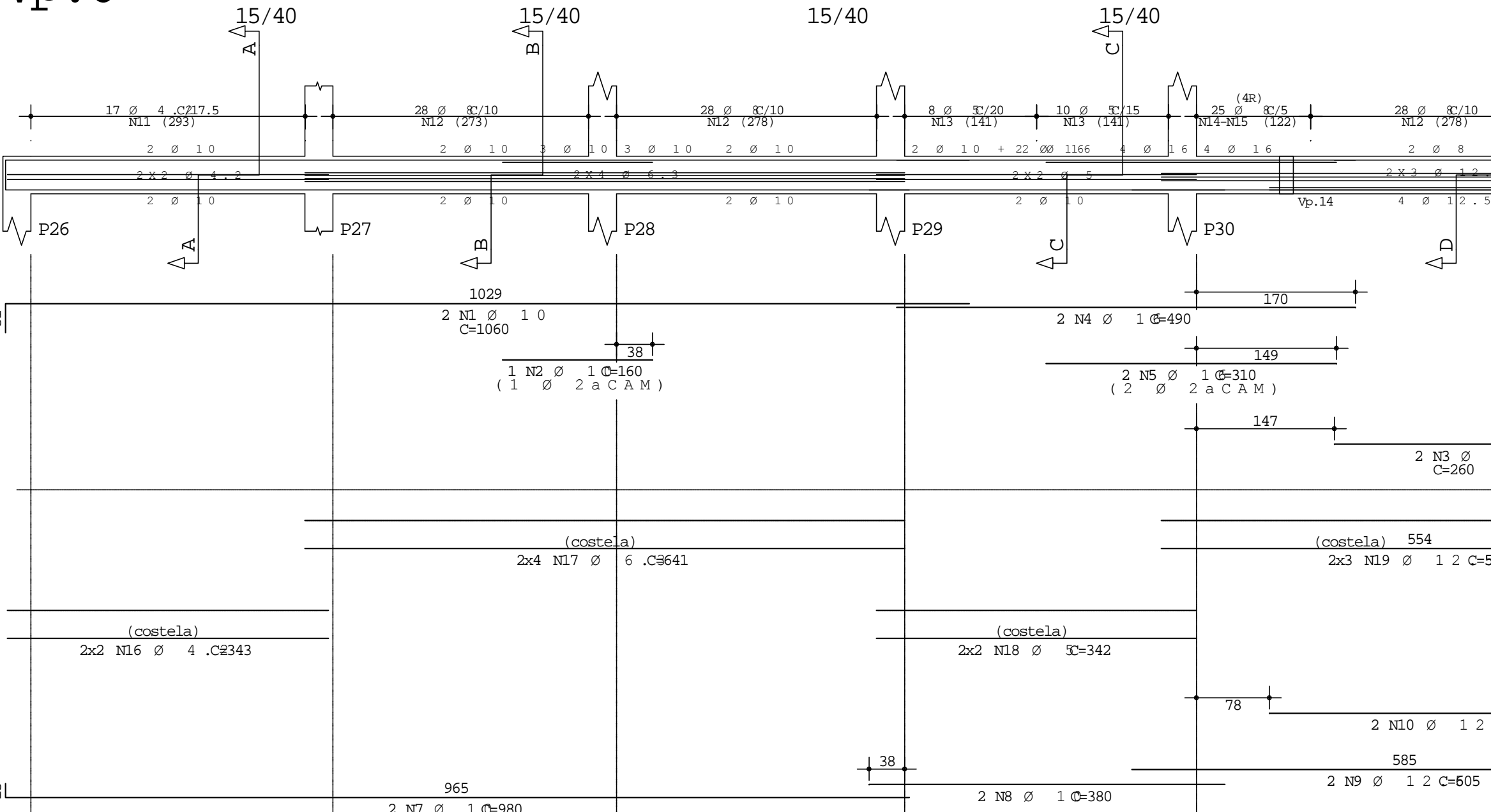
Vp.3



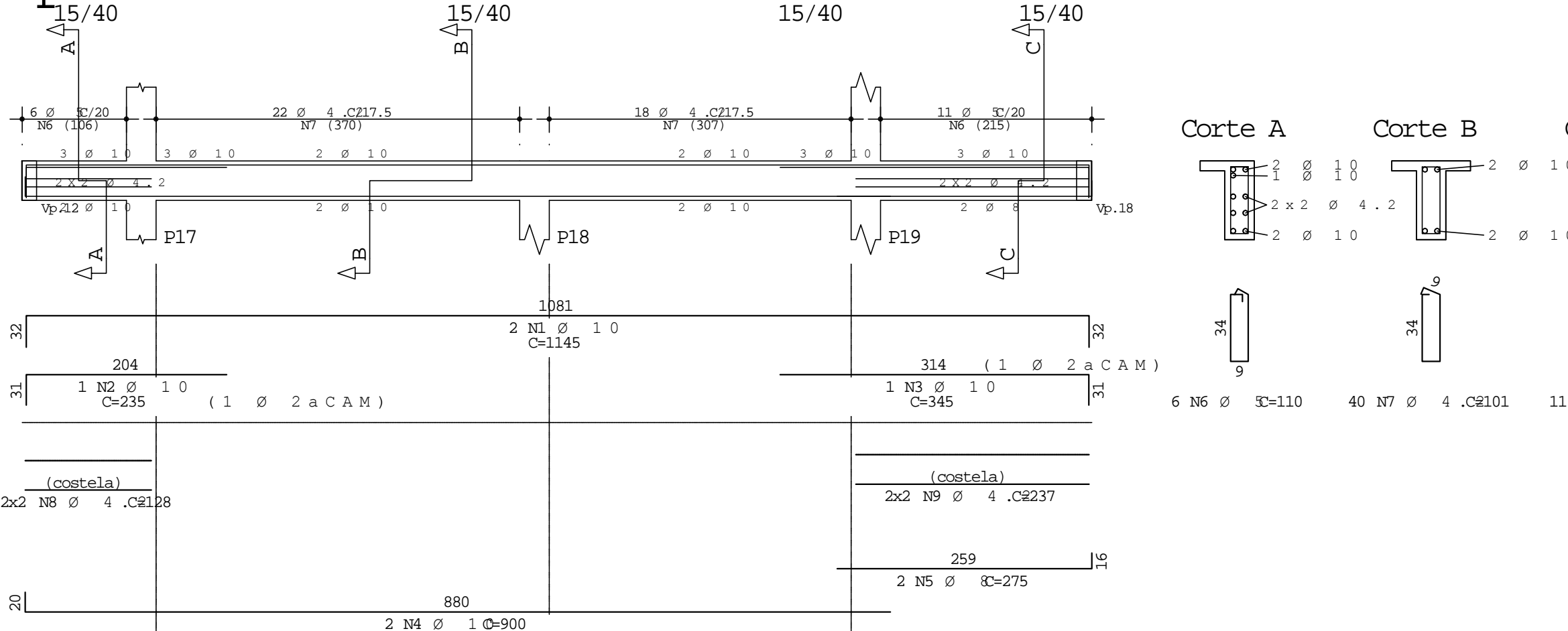
Vp.2



Vp.6

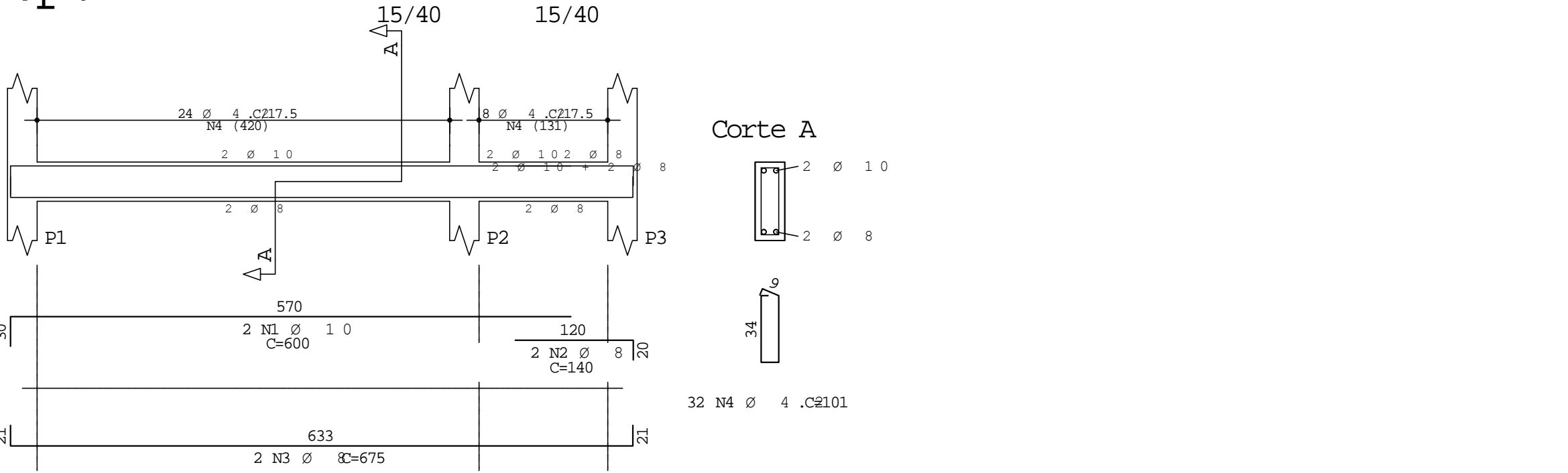


Vp.4



ESTUDO = NÃO EXECUTAR

Vp.1



ARMAÇÃO: VIGAS DO PISO

Vp.	A	C	Ø	POS	BIT (mm)	QUANT	COMPRIMENTO	
							UNIT (cm)	TOTAL (cm)
Vp.1	50A	1	10	1	10	2	600	1200
	50A	2	8	2	8	2	140	280
	50A	3	8	2	8	2	675	1350
	60B	4	4,2	32	101	32	101	3232
Vp.2	50A	1	10	2	10	2	495	990
	50A	2	10	2	10	2	185	370
	50A	3	10	2	10	2	185	370
	60B	5	4,2	17	101	17	101	1717
Vp.3	50A	1	10	2	10	2	495	990
	50A	2	10	2	10	2	185	370
	50A	3	10	2	10	2	185	370
	60B	5	4,2	17	101	17	101	1717
Vp.4	50A	1	10	2	10	2	1145	2290
	50A	2	10	2	10	2	235	470
	50A	3	10	2	10	2	185	370
	60B	6	8	2	265	2	265	530
Vp.5	50A	1	10	3	10	3	611	1833
	50A	2	10	3	10	3	215	645
	50A	3	10	3	10	3	215	645
	60B	7	4,2	20	101	20	101	2020
Vp.6	50A	1	10	2	10	2	1060	2120
	50A	2	10	2	10	2	260	520
	50A	3	10	2	10	2	260	520
	60B	4	4,2	2	101	2	101	202
Vp.7	50A	1	10	2	10	2	495	990
	50A	2	10	2	10	2	185	370
	50A	3	10	2	10	2	185	370
	60B	5	4,2	17	101	17	101	1717

RESUMO AÇO CA 50 - 60			
AÇO	BIT (mm)	COMPR (m)	PESO (kg)
60B	4,2	290	32
60B	5	174	18
50A	6,3	111	42
50A	8	202	80
50A	10	271	167
50A	12,5	95	92
50A	16	29	46
Peso 60B =			49 kg
Peso 50A =			426 kg