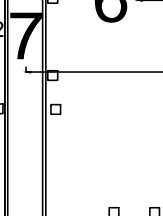
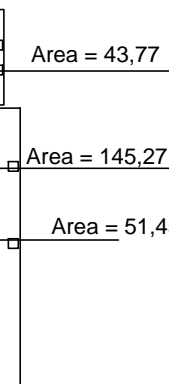
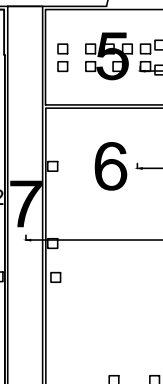
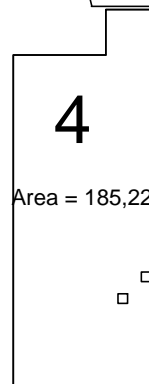
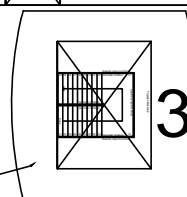


Area = 130,82 +
Area = 45,65 -
Area teto = 85,17



Composição 2: áreas de fôro			
	local	m²	
superior	1.0000	776.50	
superior	2.0000	232.97	
superior	3.0000	130.82	
superior	4.0000	11.19	
superior	5.0000	59.57	
superior	6.0000	146.83	
superior	7.0000	37.32	
superior	8.0000	145.27	
	total superior =		1.540.47
	local	m²	
inferior	1.0000	776.5000	
inferior	2.0000	204.8400	
inferior	3.0000	85.1700	
inferior	4.0000	185.2200	
inferior	5.0000	43.7700	
inferior	6.0000	145.2700	
inferior	7.0000	51.4500	
	total inferior =		1492.2200
		Superior+inferior (m²) =	3.032.69

PLANTA PAV. TERREO FÔRO

□ ALÇAPÃO