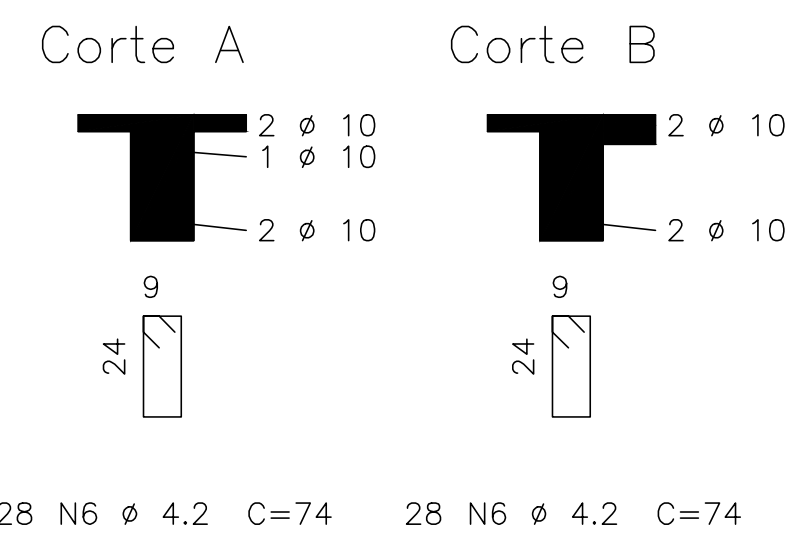
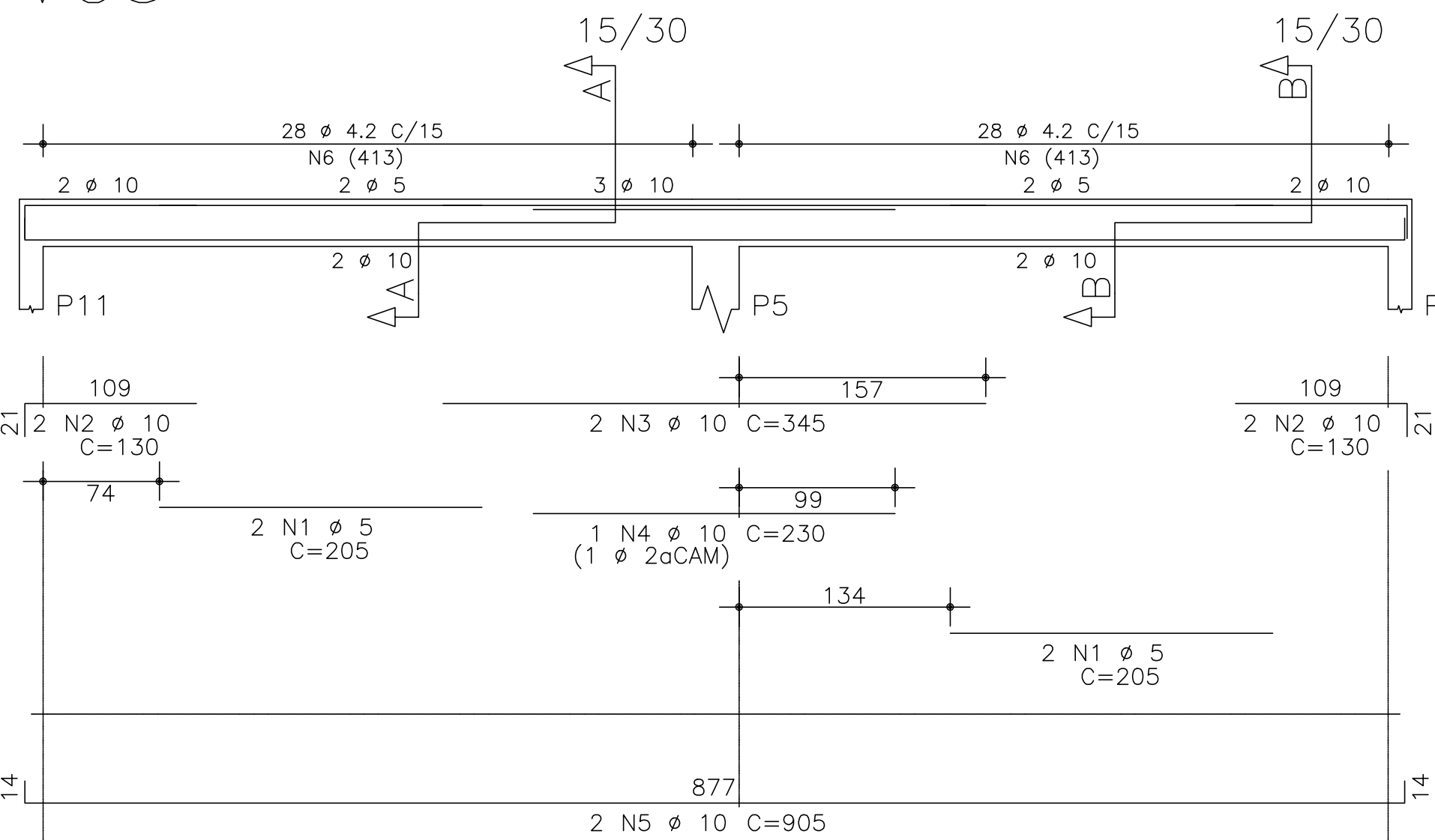
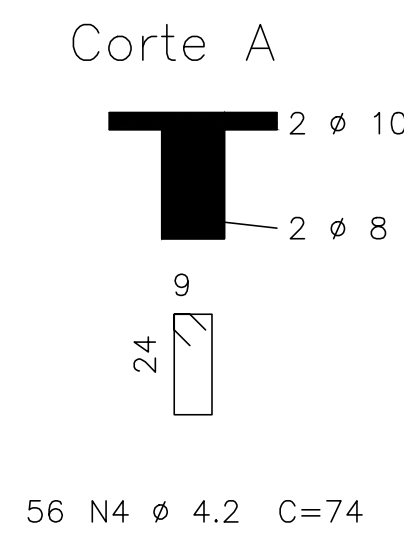
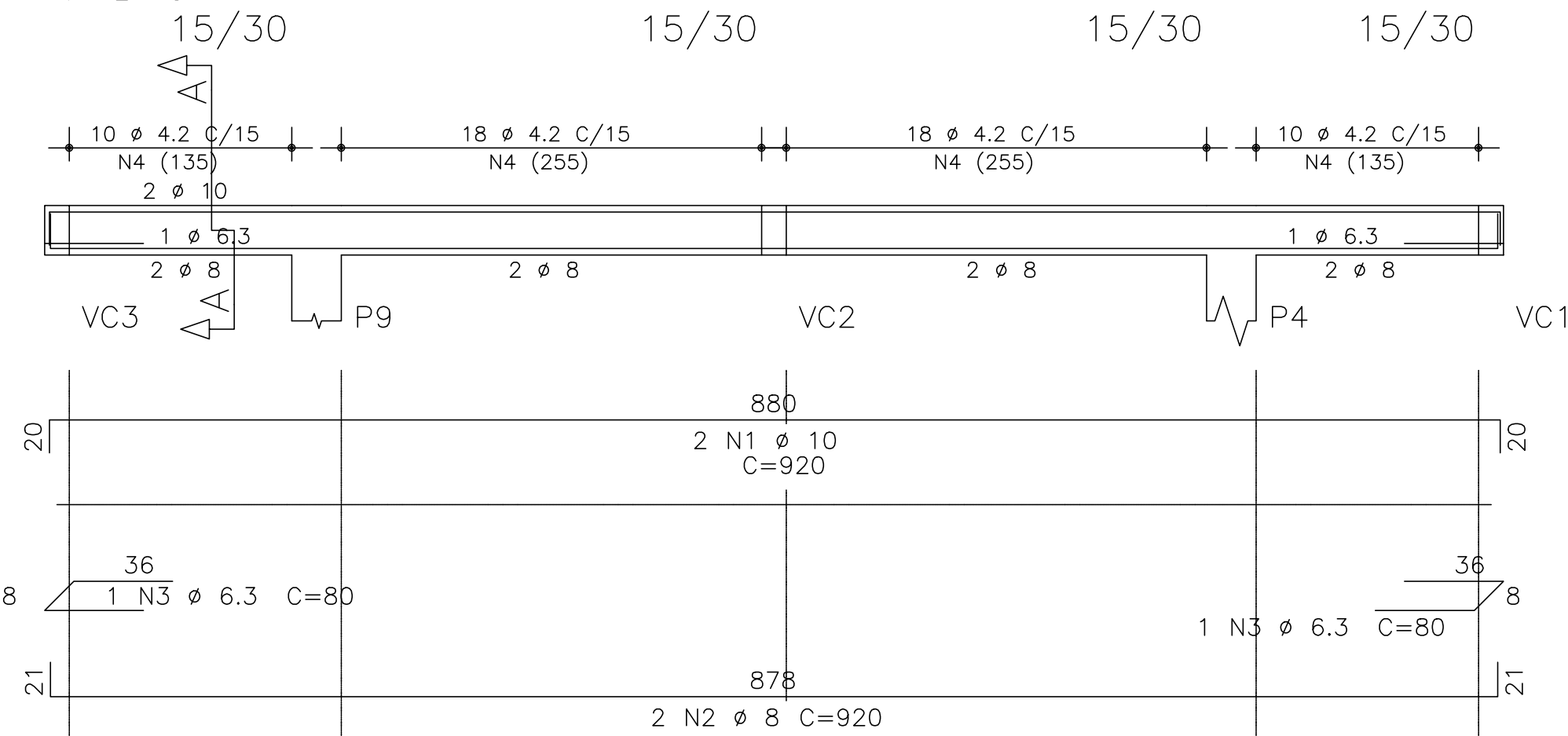


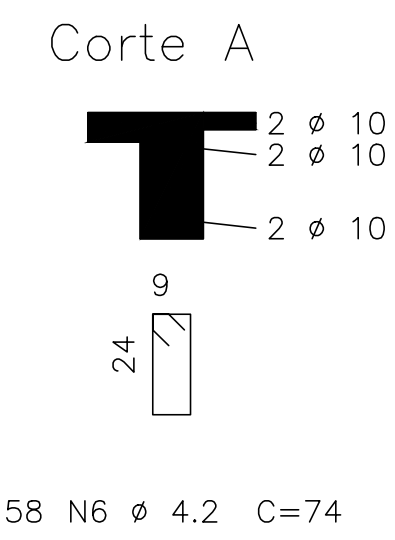
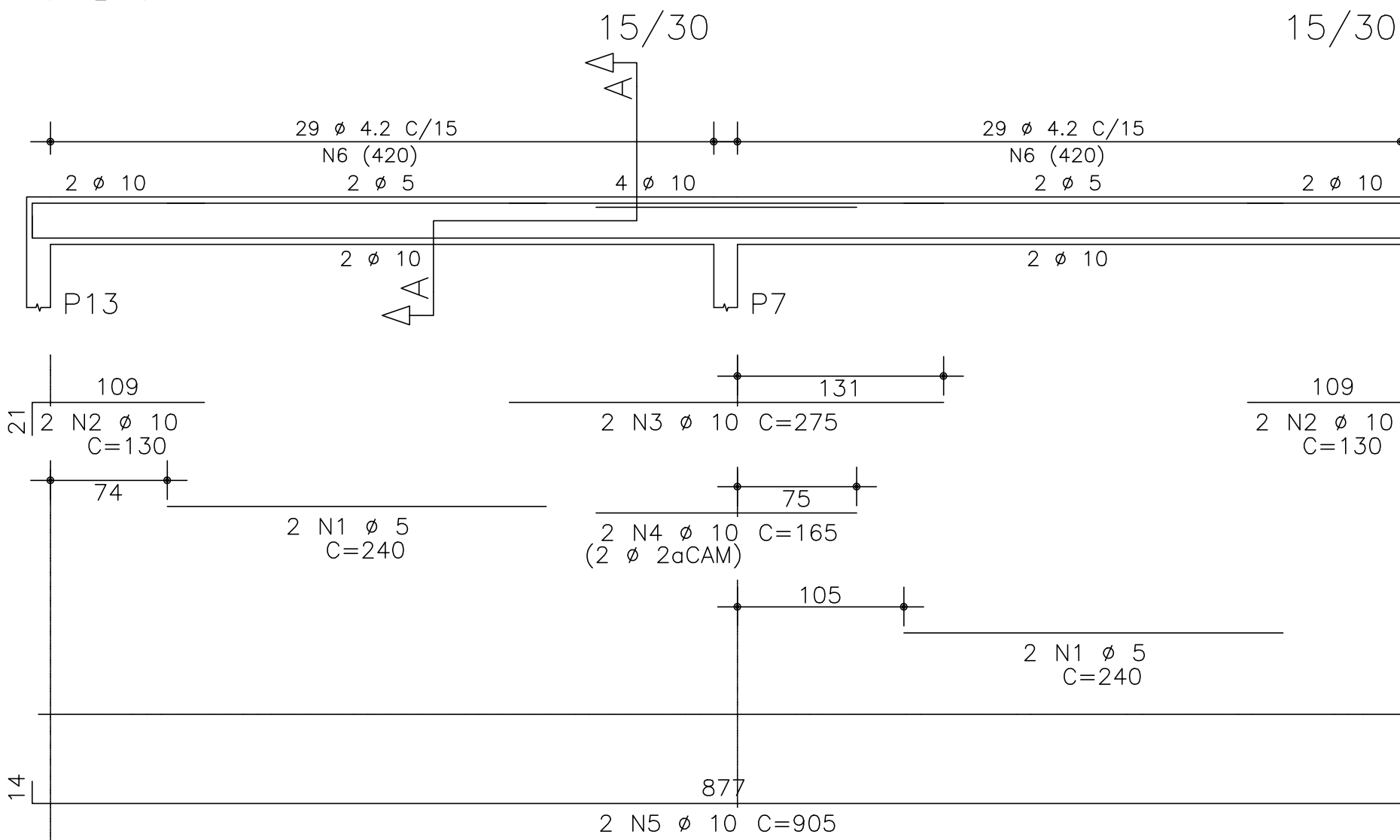
VC5



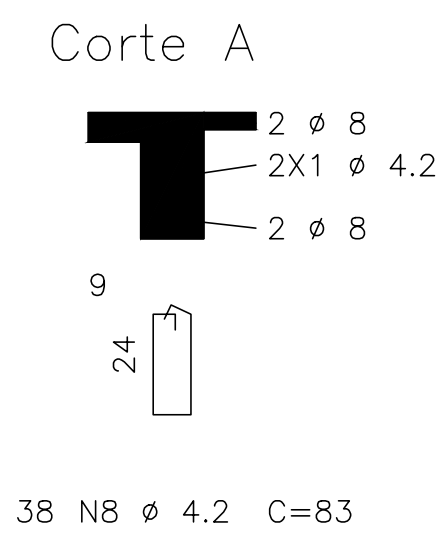
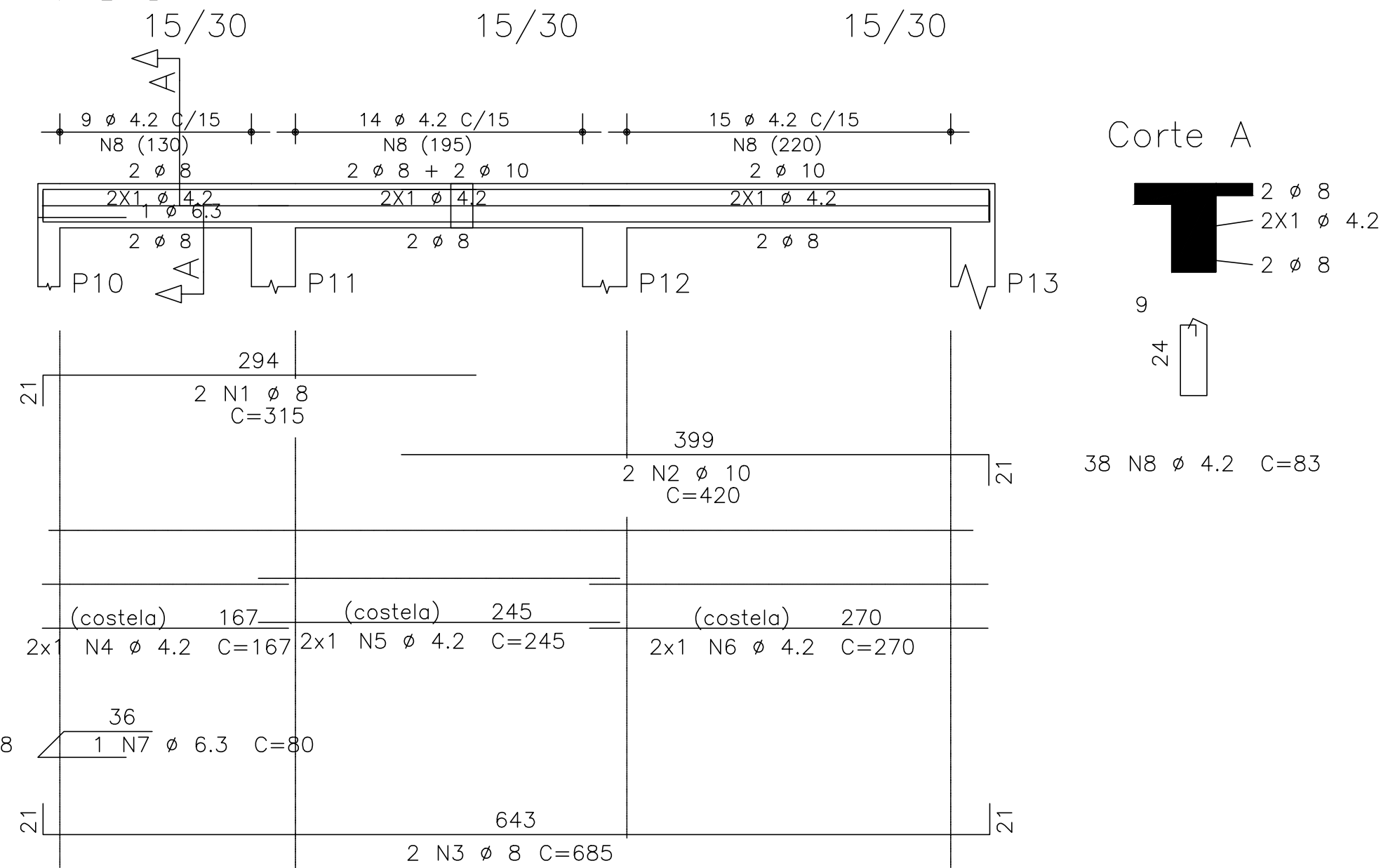
VC6



VC7



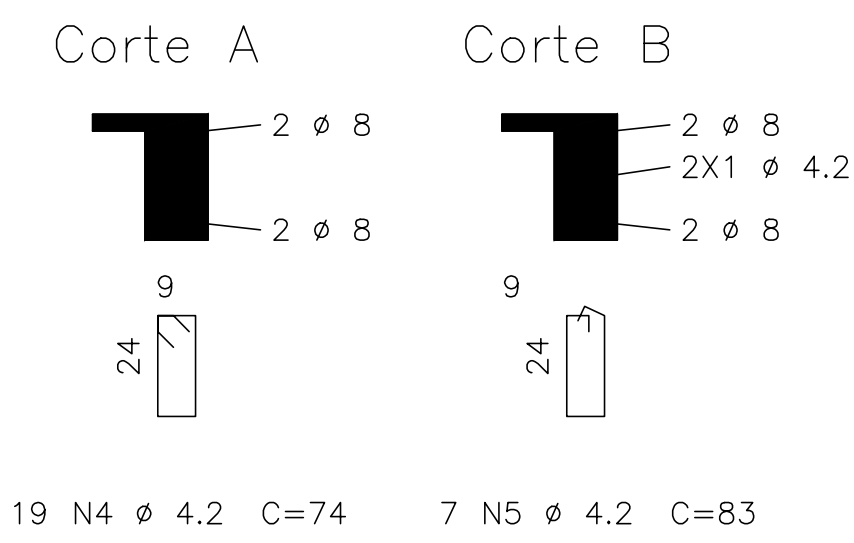
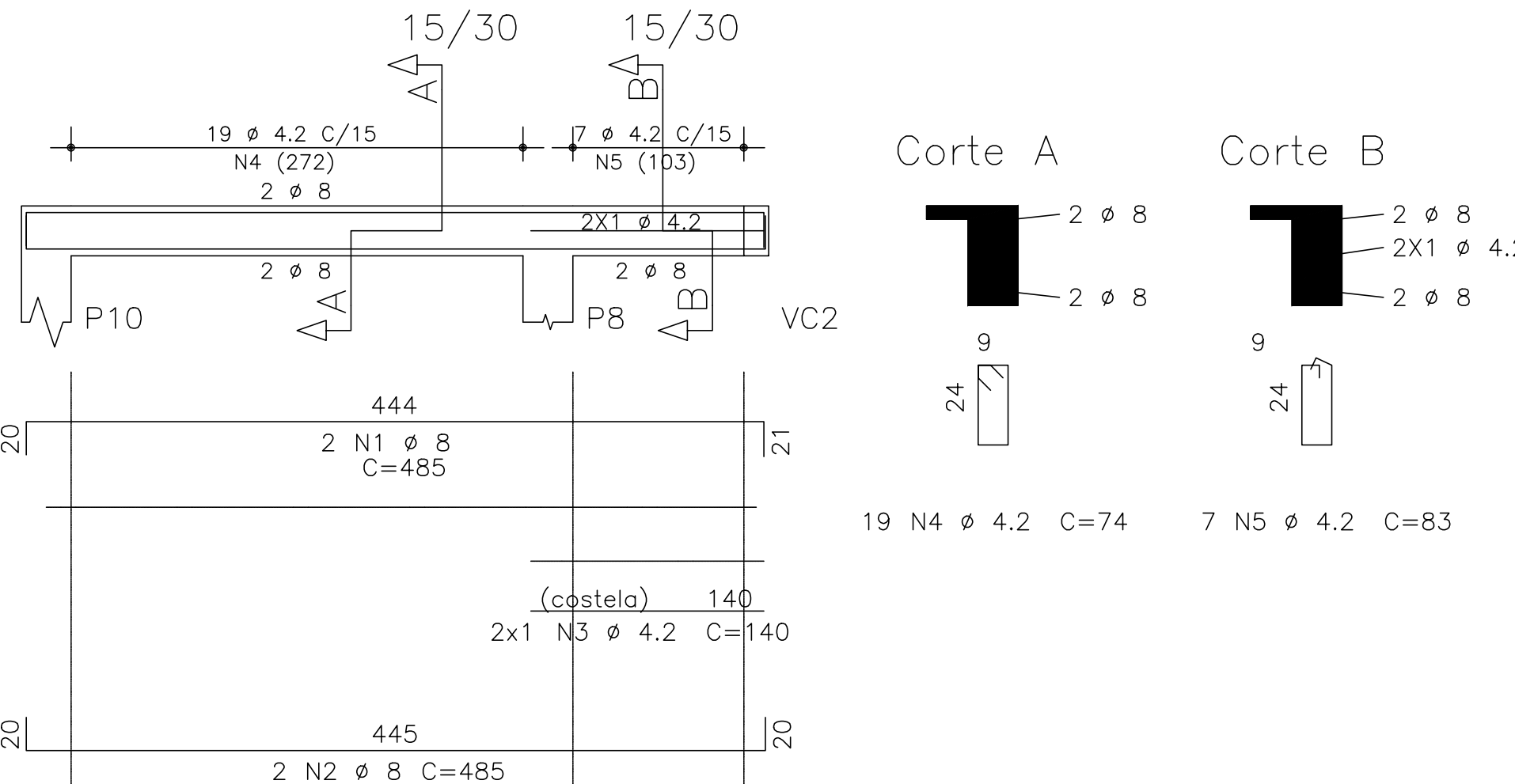
VC3



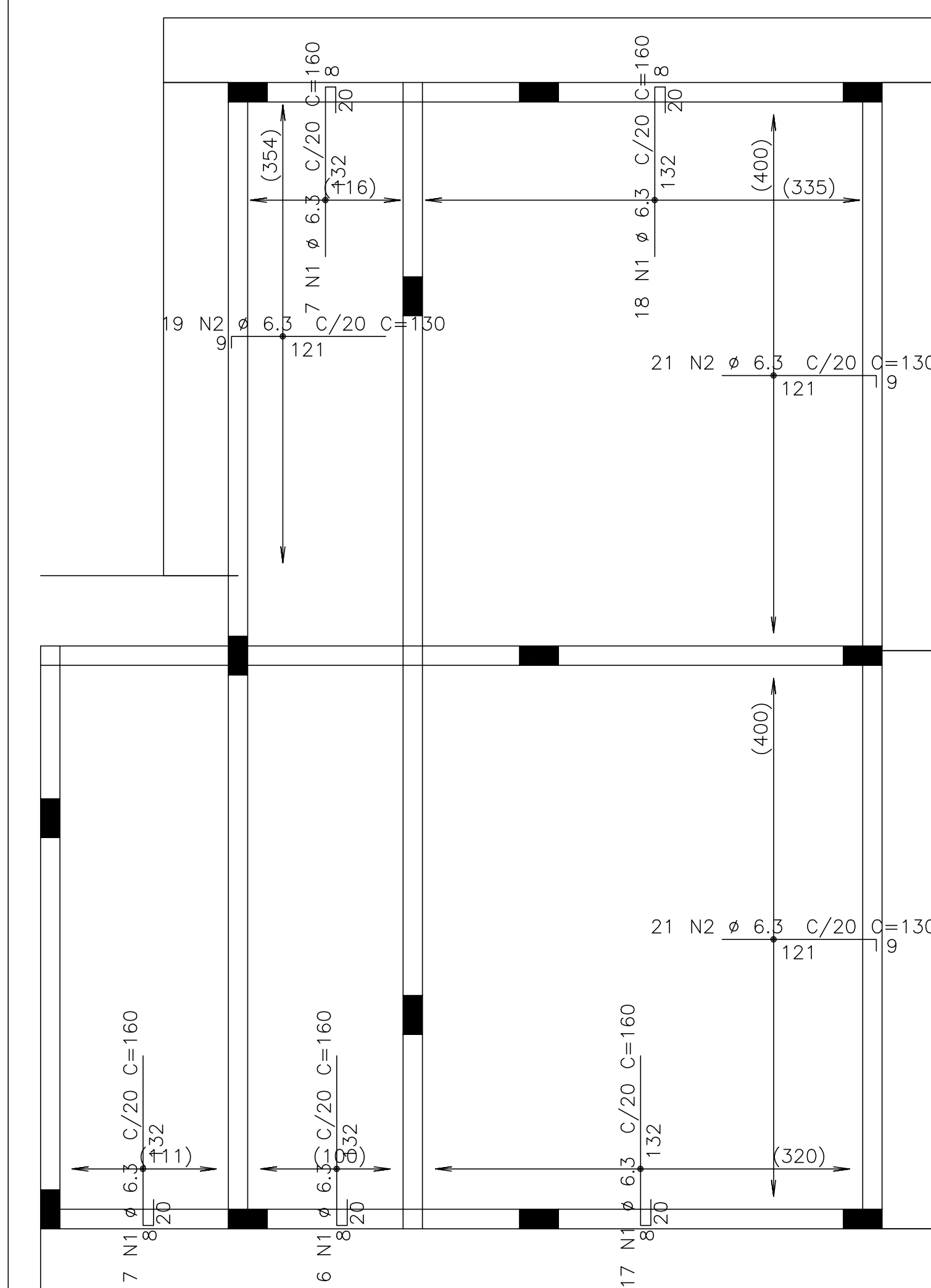
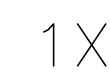
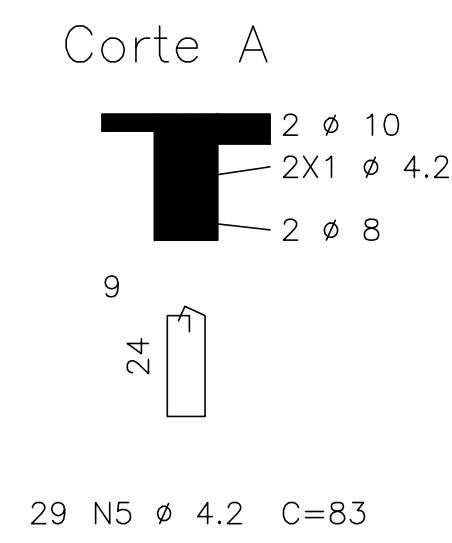
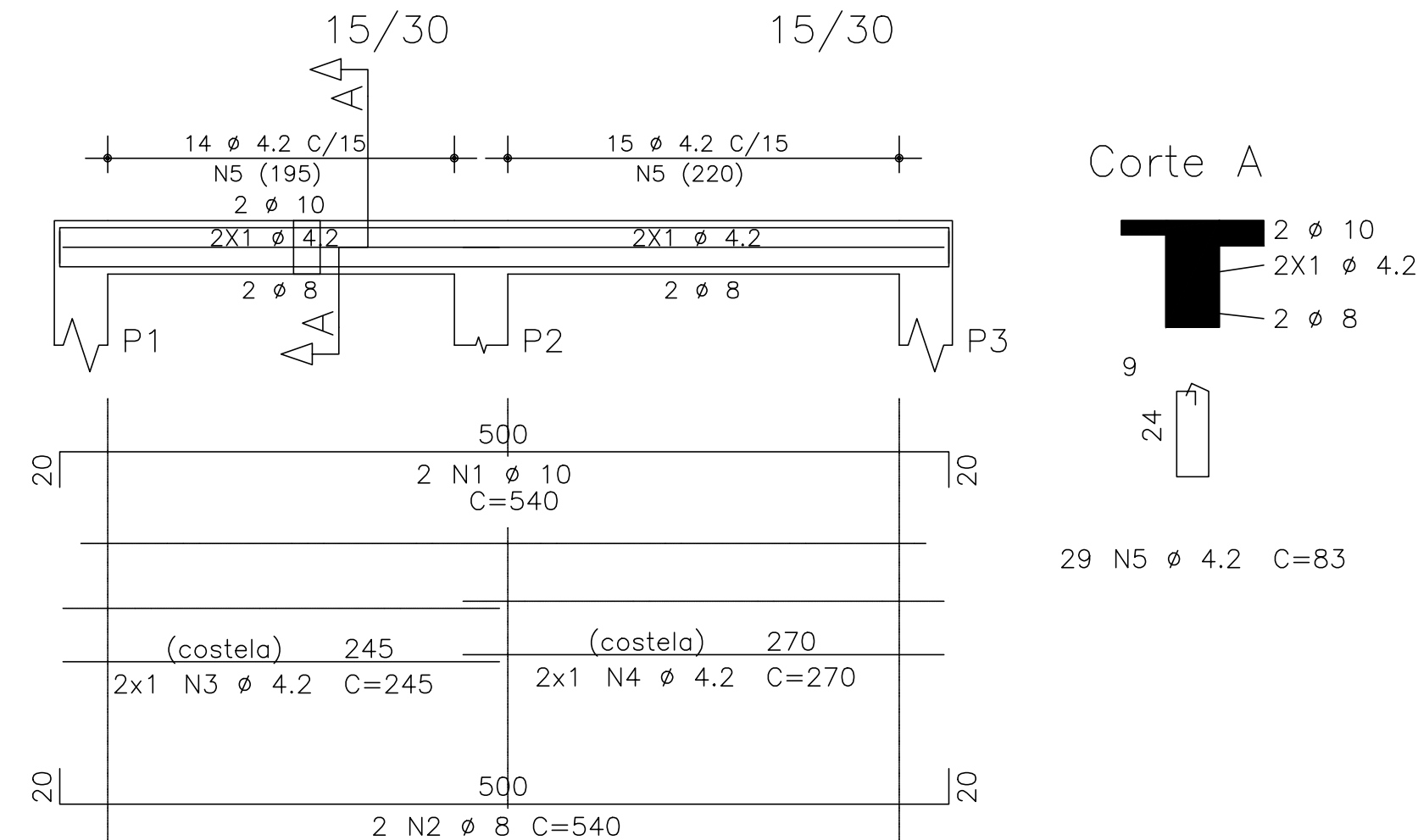
	AÇO	POS	BIT (mm)	QUANT	COMPRIMENTO	
					UNIT (cm)	TOTAL (cm)
VC1	50A	1	10	2	540	1080
	50A	2	8	2	540	1080
	60B	3	4,2	2	245	490
	60B	4	4,2	2	270	540
	60B	5	4,2	29	83	2407
VC2	50A	1	10	2	685	1370
	50A	2	8	2	680	1360
	60B	3	4,2	2	250	500
	60B	4	4,2	25	74	1850
	60B	5	5	15	85	1275
VC3	50A	1	8	2	315	630
	50A	2	10	2	420	840
	50A	3	8	2	685	1370
	60B	4	4,2	2	167	334
	60B	5	4,2	2	245	490
	60B	6	4,2	2	270	540
	50A	7	4,3	1	80	80
	60B	8	4,2	36	83	3154
VC4	50A	1	8	2	485	970
	50A	2	8	2	485	970
	60B	3	4,2	2	140	280
	60B	4	4,2	19	74	1406
	60B	5	4,2	7	83	581
VC5	60B	1	5	4	205	820
	50A	2	10	4	130	520
	50A	3	10	2	345	690
	50A	4	10	1	230	230
	50A	5	10	2	905	1810
	60B	6	4,2	56	74	4144
VC6	50A	1	10	2	920	1840
	50A	2	8	2	920	1840
	50A	3	6,3	2	80	160
	50A	4	4,2	56	74	4144
VC7	60B	1	5	4	240	960
	50A	2	10	4	130	520
	50A	3	10	2	275	550
	50A	4	10	2	165	330
	50A	5	10	2	905	1810
	60B	6	4,2	58	74	4292
	60B	7	4,2	58	74	4292

RESUMO AÇO CA 50-60			
AÇO	BIT (mm)	COMPR (m)	PESO (kg)
60B	4,2	252	27
60A	5	31	5
50A	6,3	2	1
50A	8	82	33
50A	10	116	73
Peso Total	60B =	32	kg
Peso Total	50A =	106	kg

VC4



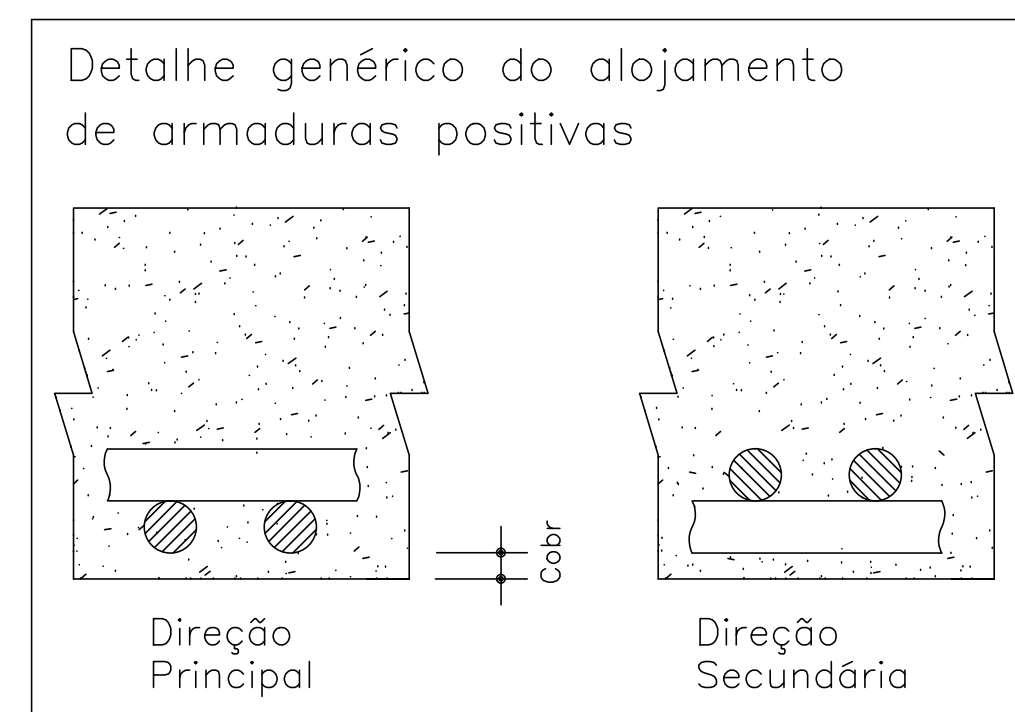
VC 1



AÇO	POS	BIT (mm)	QUANT	COMPRIMENTO	
				UNIT (cm)	TOTAL (cm)
50A	1	6.3	55	160	8800
50A	2	6.3	61	130	7930
60B	3	5	1	--CORR--	10680

RESUMO AÇO CA 50-60			
AÇO	BIT (mm)	COMPR (m)	PESO (kg)
60B	5	107	17
50A	6,3	167	42
Peso Total	60B =		17 kg
Peso Total	50A =		42 kg

1 N3 Ø 5 C/20 C=COR



					OBRA N.º
CLIENTE					DES. N.º
UENP - CLM					CLM - CANTINA
OBRA					
CANTINA					
TÍTULO					02
					REV. N.º
ESTRUTURAL: LAJE DO WC					
DATA	ESCALA	FOK	DESENHO	VERIF.	ENG.º
09/10/2017					